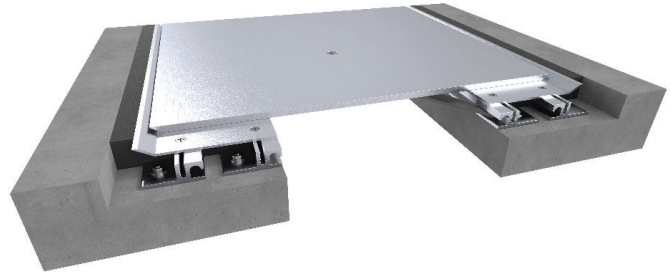


426 Series

A01 -Floor to Floor
A02 - Floor to Wall



Movement Rating ± 50%

Product Guide



Thermal



Interior



Fire Rated Option



Vapor Barrier Option



Seismic



Heavy Duty



ADA Compliant

- ▶ Thick coverplate for interior applications
- ▶ 426 Series offers a full width cover with minimal gaps (also reference the Inpro 430 Series as a cost-effective option for similar attributes)
- ▶ Seismic capable centerbar system
- ▶ Capable of achieving 100% + / - joint movement
- ▶ Mill finish standard, brushed or bead blasted finishes available
- ▶ Stainless steel cover plate and wing options available
- ▶ Optional waterproofing accessories available.
- ▶ For load information contact your InPro Rep. to have the system designed specifically for your project's load requirements

Application	System	W		H1		H2		S		B		Movement +/-			
		Joint Width		Frame Height 1		Height 2		Sightline		Blockout		Horizontal		Vertical	
		US	mm	US	mm	US	mm	US	mm	US	mm	US	mm	US	mm
Floor to Floor	426-A01-050	2"	51	1 1/2"	38	*	*	10 5/8"	269	5 1/2"	140	1"	25	1/2"	13
	426-A01-100	4"	102	1 1/2"	38	*	*	10 5/8"	269	4 1/2"	114	2"	51	1"	25
	426-A01-150	6"	152	1 1/2"	38	*	*	14 7/16"	367	5 3/16"	132	3"	76	1 1/2"	38
	426-A01-200	8"	203	1 1/2"	38	*	*	17 7/16"	443	5 5/8"	143	4"	102	2"	51
	426-A01-250	10"	254	1 1/2"	38	*	*	19 7/16"	494	5 5/8"	143	5"	127	2 1/2"	64
	426-A01-300	12"	305	1 1/2"	38	*	*	24 7/8"	632	7 1/2"	189	6"	152	3"	76
	426-A01-400	16"	406	1 1/2"	38	*	*	30 7/8"	784	8 1/2"	214	8"	203	4"	102
	426-A01-450	18"	457	1 1/2"	38	*	*	33 7/8"	860	8 15/16"	227	9"	229	4.5"	114
Floor to Wall	426-A02-050	2"	51	1 1/2"	38	*	*	6 5/16"	160	5 1/2"	140	1/2"	13	1/2"	13
	426-A02-100	4"	102	1 1/2"	38	*	*	7 5/16"	185	4 1/2"	114	1	25	1/2"	13
	426-A02-150	6"	152	1 1/2"	38	*	*	10 3/16"	259	5 3/16"	132	1 1/2"	38	3/4"	19
	426-A02-200	8"	203	1 1/2"	38	*	*	12 11/16"	323	5 5/8"	143	2"	51	1"	25
	426-A02-250	10"	254	1 1/2"	38	*	*	14 11/16"	374	5 5/8"	143	2 1/2"	64	1 1/4"	32
	426-A02-300	12"	305	1 1/2"	38	*	*	18 7/16"	468	7 7/16"	189	3"	76	1 1/2"	38
	426-A02-400	16"	406	1 1/2"	38	*	*	23 7/16"	595	8 7/16"	214	4"	102	2"	51
	426-A02-450	18"	457	1 1/2"	38	*	*	25 15/16"	659	8 15/16"	227	4 1/2"	114	2 1/4"	57

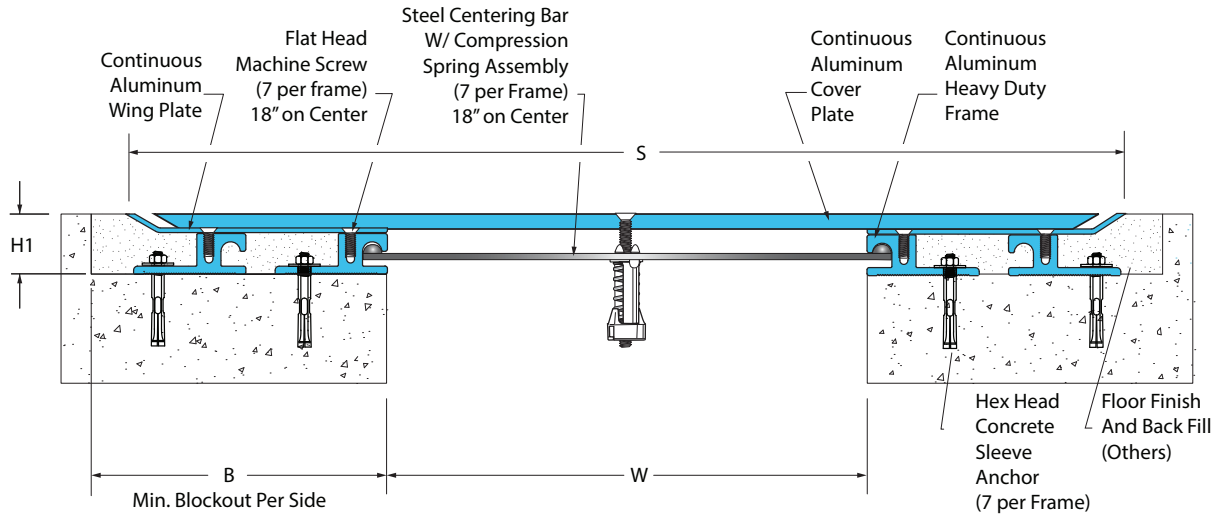
Series is available in larger widths, please contact Inpro for more details.

IPC.1523/REV.9

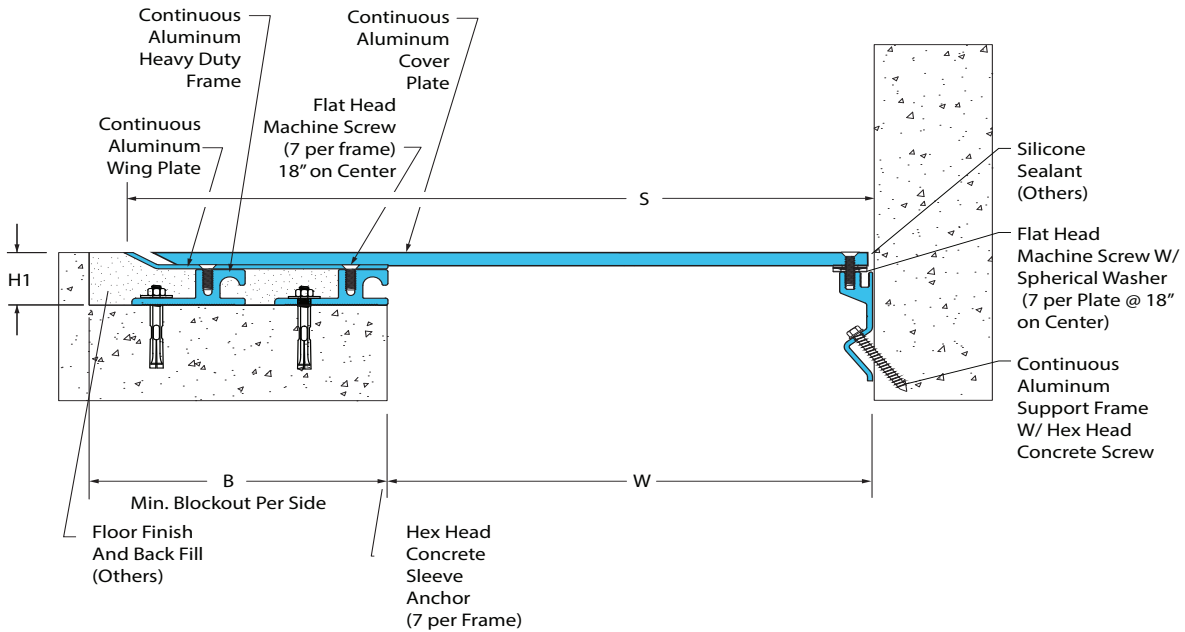
426 Series

Floor Systems

426-A01 Floor to Floor
(426 Series 12" (300mm) system shown)

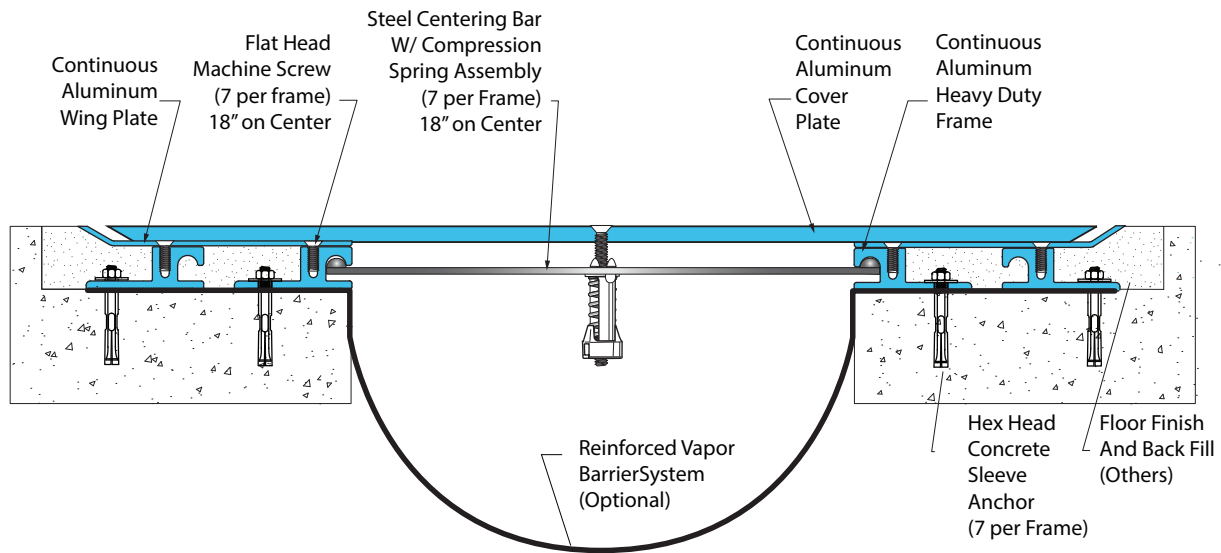


426-A02 Floor to Wall
(426 Series 12" (300mm) system shown)



426 Series Options

Vapor Barrier System
(426 Series 12" (300mm) system shown)



Fire Blanket System
(426 Series 12" (300mm) system shown)

