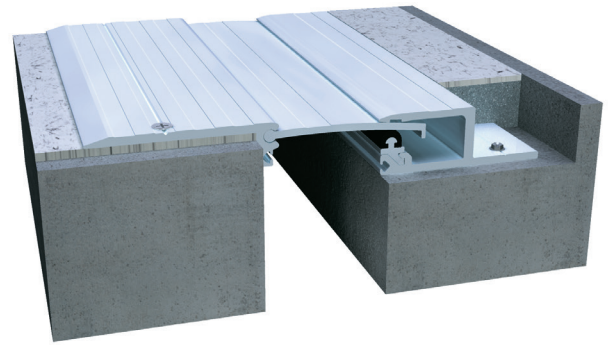


320 Series

A01 - Floor to Floor



Movement Rating ± 20%

Product Guide



Interior



Seismic



Fire Rated
Option



Vapor Barrier
Option



ADA
Compliant

- ▶ Designed for retrofits, additions and renovations where blockout occurs on one side only
- ▶ Glide plate allow for full seismic movement
- ▶ Gasketed to eliminate transition rattle

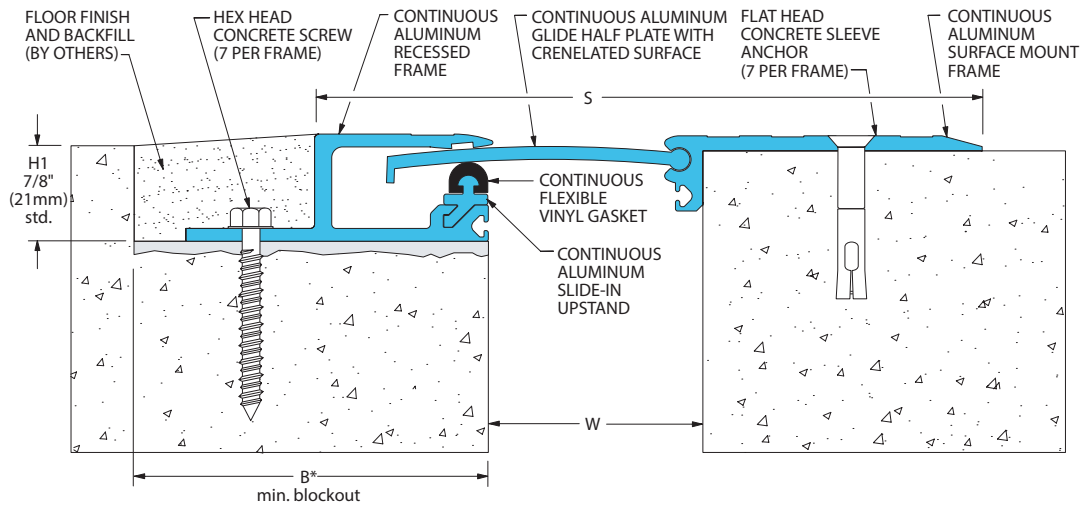
Application	System	W		H1		H2		S		B		Movement +/-			
		Joint Width		Frame Height 1		Height 2		Sightline		Blockout		Horizontal		Vertical	
		US	mm	US	mm	US	mm	US	mm	US	mm	US	mm	US	mm
Floor to Floor	320-A01-025	1"	25	1"	25	*	*	4 5/8"	117	2 3/4"	70	1/8"	3	1/4"	6
	320-A01-050	2"	51	1"	25	*	*	6 1/8"	156	3 1/4"	83	3/8"	10	1/2"	13
	320-A01-075	3"	76	1"	25	*	*	7 5/8"	194	3 3/4"	95	9/16"	14	3/4"	19
	320-A01-100	4"	102	1"	25	*	*	9 1/8"	232	4 1/4"	108	3/4"	19	1"	25

IPC.840/REV.12

320 Series

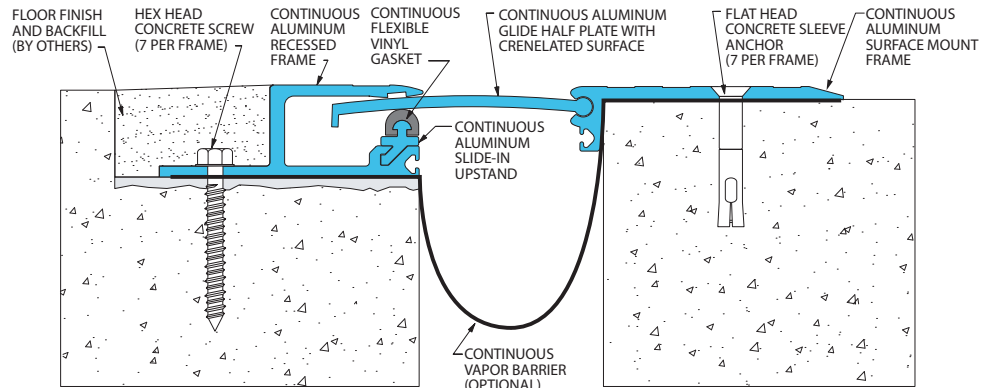
New to Existing Floor Systems

320-A01 Floor/Floor
(2" (50mm) system shown)



320 Series Options

Integral Vapor Barrier
(320-A01-050 system shown)



Fire Blanket System
(320-A01-050 system shown)

