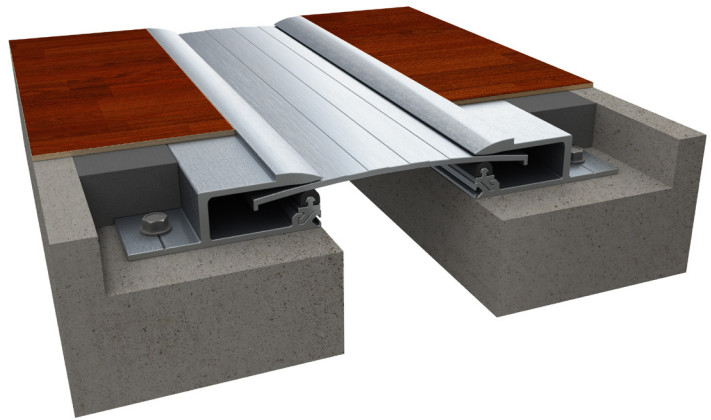


# 304 Series

A01 - Floor to Floor

A02 - Floor to Wall



**Movement Rating ± 50%**

## Product Guide



Interior



Seismic



Fire Rated Option



Vapor Barrier Option



ADA Compliant

- ▶ 1/8" (3mm) nosing designed specifically to receive vinyl & VCT flooring
- ▶ Glide plate allows for full seismic movement
- ▶ Continuous noise dampening gasket
- ▶ Standard loading capabilities

Application	System	W		H1		H2		S		B		Movement +/-			
		Joint Width		Frame Height 1		Height 2		Sightline		Blockout		Horizontal		Vertical	
		US	mm	US	mm	US	mm	US	mm	US	mm	US	mm	US	mm
Floor to Floor	304-A01-025	1"	25	1"	25	1/8"	3	2 5/8"	67	2 3/4"	70	1/2"	13	1/4"	6
	304-A01-050	2"	51	1"	25	1/8"	3	3 5/8"	92	3 1/4"	83	1"	25	1/2"	13
	304-A01-075	3"	76	1"	25	1/8"	3	4 5/8"	117	3 3/4"	95	1 1/2"	38	3/4"	19
	304-A01-100	4"	102	1"	25	1/8"	3	5 5/8"	143	4 1/4"	108	2"	51	1"	25
Floor to Wall	304-A02-025	1"	25	1"	25	1/8"	3	1 3/4"	44	2 3/4"	70	1/8"	3	1/8"	3
	304-A02-050	2"	51	1"	25	1/8"	3	2 3/4"	70	3 1/4"	83	3/8"	10	1/4"	6
	304-A02-075	3"	76	1"	25	1/8"	3	3 3/4"	95	3 3/4"	95	9/16"	14	3/8"	10
	304-A02-100	4"	102	1"	25	1/8"	3	4 3/4"	121	4 1/4"	108	3/4"	19	1/2"	13

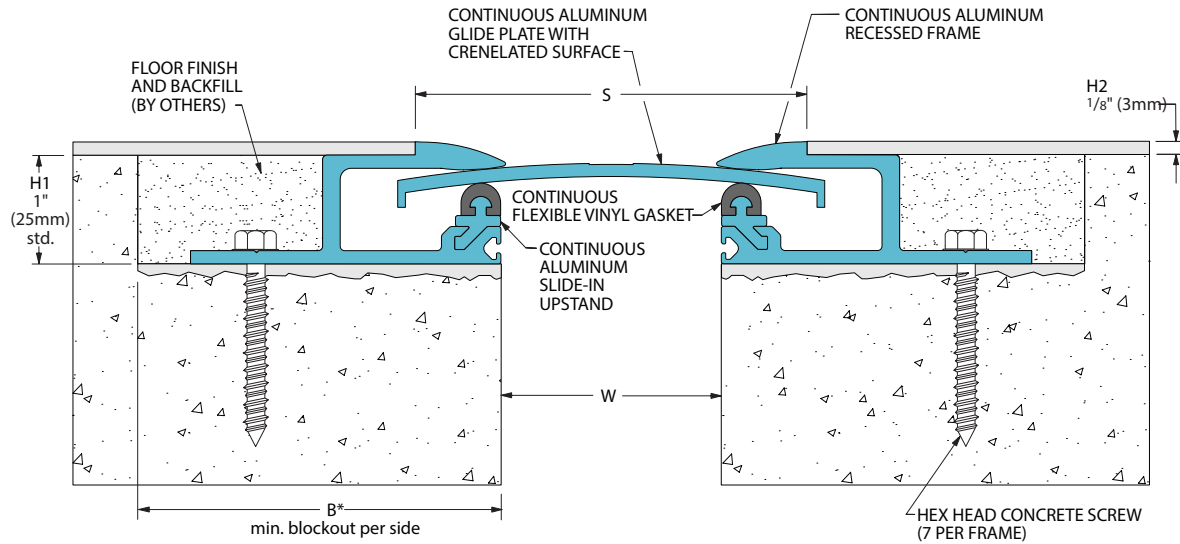
\*Contact your InPro Representative for loading capabilities

IPC.902/REV.12

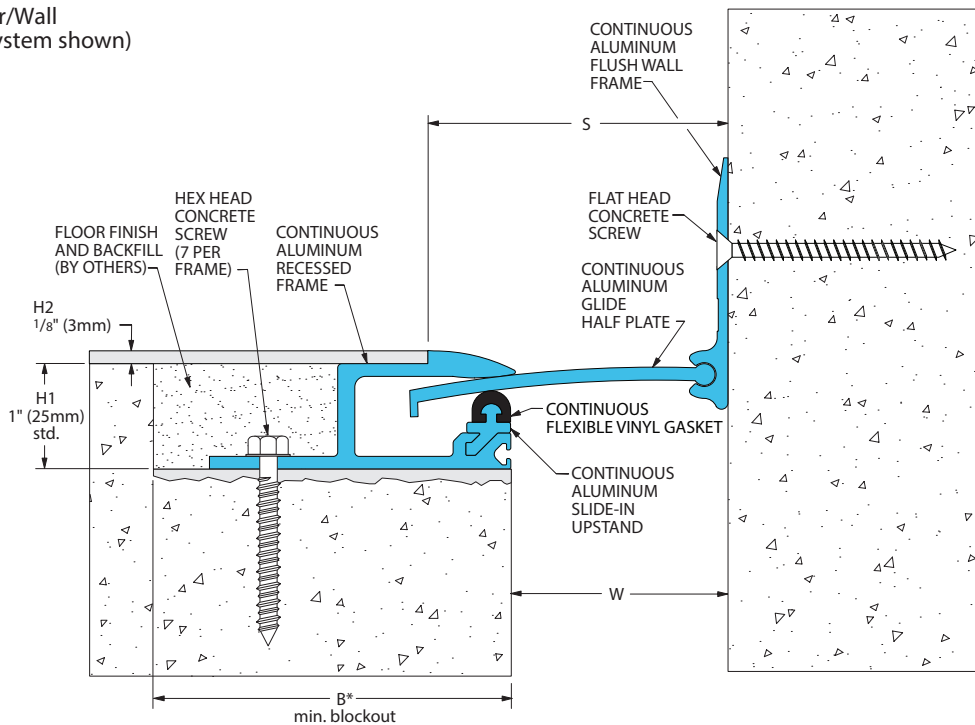
# 304 Series

## Glide Plate Seismic Floor Systems

304-A01 Floor/Floor  
(2" (50mm) system shown)



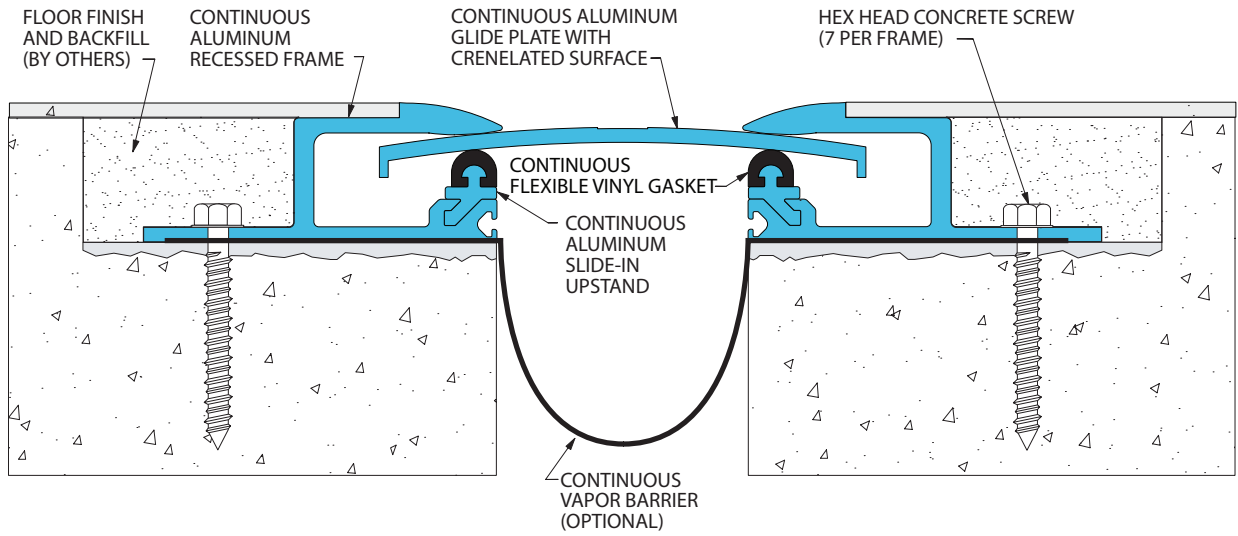
304-A02 Floor/Wall  
(2" (50mm) system shown)



# 304 Series

## Options

Integral Vapor Barrier  
(304-A01-050 system shown)



Reactofire Fire Blanket System  
(304-A01-050 system shown)

