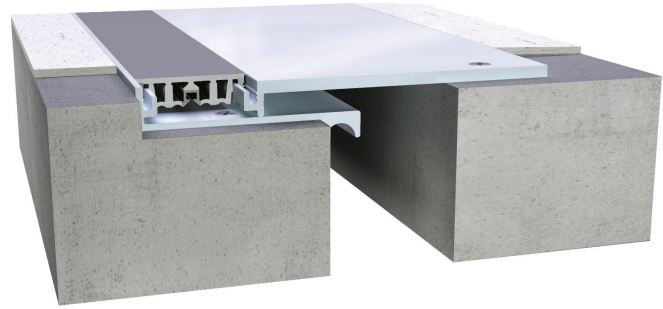


# 141 Series Surface Mount

A01 - Floor to Floor



**Movement Rating ± 25%**

## Product Guide



Thermal



Interior



Fire Rated Option



Vapor Barrier Option



ADA Compliant

- ▶ Dual durometer seal provides secure fit and optimal flexibility
- ▶ Seals absorb thermal movement
- ▶ Designed for retrofits, additions and renovations where blackout occurs on one side only
- ▶ Adaptable to many floor finishes including concrete, epoxy, vinyl and carpet
- ▶ Easy to clean flush seals No dirt or water traps
- ▶ Snap-fit design for easy on site assembly
- ▶ Mill finish aluminum
- ▶ Integral vapor barrier option available
- ▶ Standard and Custom seal colors available.
  - All seals achieve UL Environmental Greenguard Gold Certification for ultra low VOC's

Application	System	W		H1		H2		S		B		Movement +/-			
		Joint Width		Frame Height 1		Frame Height 2		Sightline		Blockout		Horizontal		Vertical	
		US	mm	US	mm	US	mm	US	mm	US	mm	US	mm	US	mm
Floor to Floor	141-A01-025	1"	25	5/8"	16	3/16"	5	5 5/8"	64	2 3/4"	70	1/4"	6	1/4"	6
	141-A01-038	1 1/2"	38	5/8"	16	3/16"	5	6"	75	2 3/4"	70	3/8"	10	3/8"	10
	141-A01-050	2"	51	5/8"	16	3/16"	5	6 1/2"	86	2 3/4"	70	1/2"	13	1/2"	13

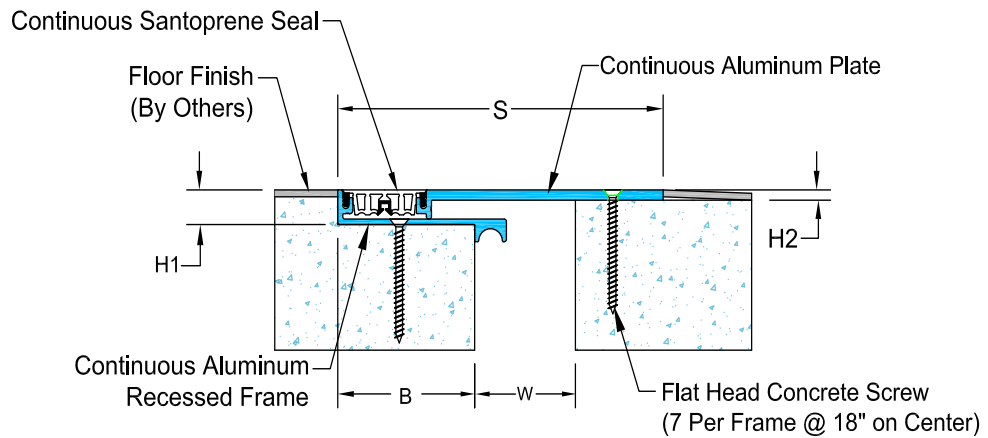
May be available in larger widths, please contact InPro Corporation for more details.

IPC.1513/REV.6

# 141 Series

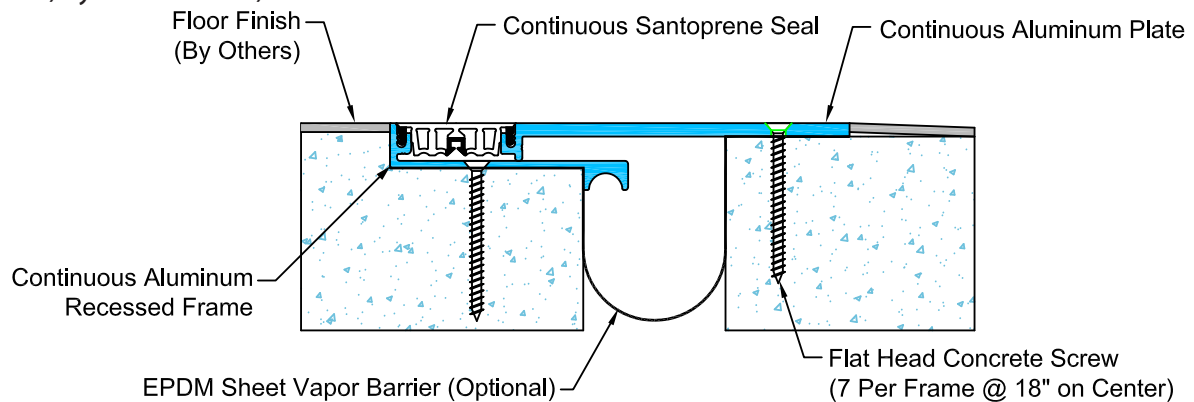
## Surface Mount Floor Systems

141-A01 Floor/Floor for VCT  
(2" (50mm) system shown)



## 141 Series Options

Wrap Around Vapor Barrier  
(2" (50mm) system shown)



Fire Barrier

(2" (50mm) system shown)

