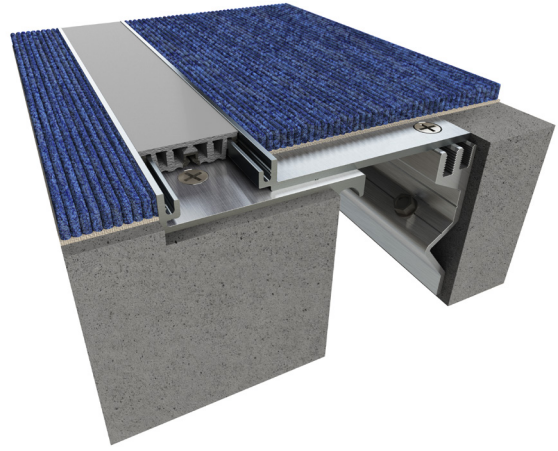


# 133 Series New to Existing

A01 - Floor to Floor

A02 - Floor to Wall



**Movement Rating ± 25%**

## Product Guide



Thermal



Interior



Fire Rated Option



ADA Compliant

- ▶ Recessed mount frames for minimal sightline, adaptable with floor finishes of 3/8" (9mm) depth
- ▶ Surface mount design make system ideal for renovation
- ▶ Dual durometer seal provides secure fit and optimal flexibility
- ▶ Standard and Custom seal colors available.
  - All seals achieve UL Environmental Greenguard Gold Certification for ultra low VOC's

Application	System	W		H1		H2		S		B		Movement +/-			
		Joint Width		Frame Height 1		Height 2		Sightline		Blockout		Horizontal		Vertical	
		US	mm	US	mm	US	mm	US	mm	US	mm	US	mm	US	mm
Floor/Floor	133-A01-050	2"	50	5/8"	16	3/8"	10	1 7/8"	47	2 1/2"	64	1/2"	13	1/2"	13
	133-A01-075	3"	75	5/8"	16	3/8"	10	1 7/8"	47	2 1/2"	64	3/4"	19	3/4"	19
Floor/Wall	133-A02-050	2"	50	5/8"	16	3/8"	10	1 7/8"	47	2 1/2"	64	1/2"	13	1/2"	13
	133-A02-075	3"	75	5/8"	16	3/8"	10	1 7/8"	47	2 1/2"	64	3/4"	19	3/4"	19

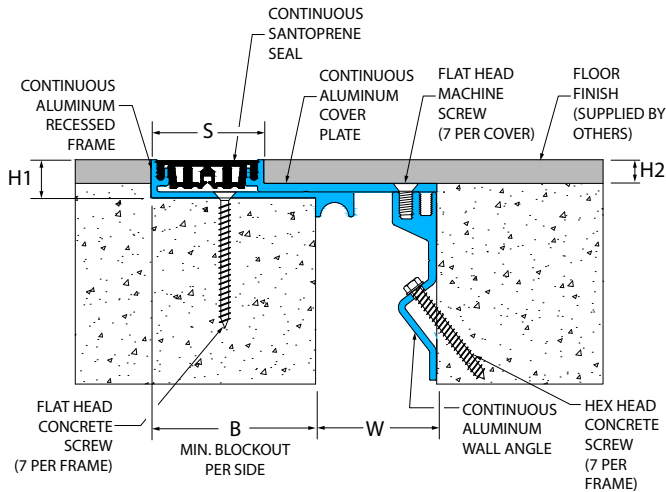
May be available in larger widths, please contact InPro Corporation for more details.

IPC.1370/REV.7

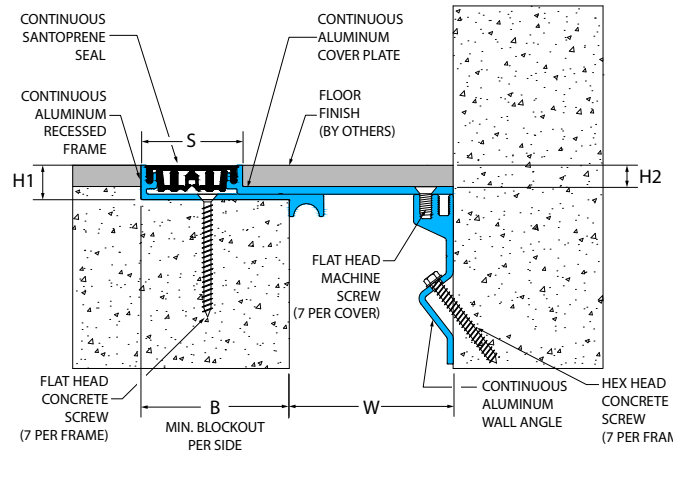
# 133 Series

## Flush Mount Floor Systems

133-A01 Floor/Floor  
(2" (50mm) system shown)



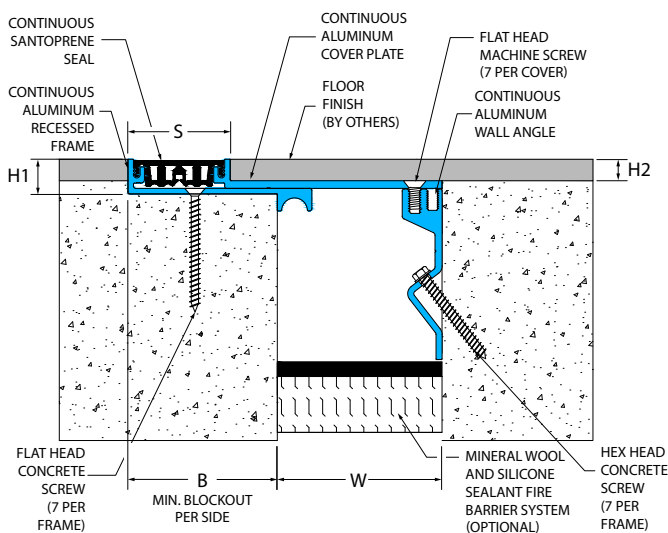
133-A02 Floor/Wall  
(3" (75mm) system shown)



# 133 Series

## Options

133-A01 Floor/Floor With Mineral Wool  
(3" (75mm) system shown)



133-A01 Floor/Floor With Fire Blanket  
(3" (75mm) system shown)

