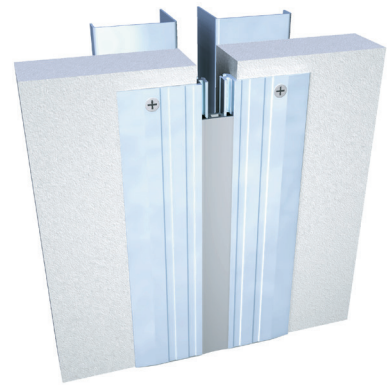


104 Series Surface Mount

A07 - Wall to Wall or Ceiling to Ceiling

A09 - Wall to Corner or Wall to Ceiling



Movement Rating ± 25%

Product Guide



Thermal



Interior



Fire Rated
Option



Vapor Barrier
Option

- ▶ Dual durometer seal provides secure fit and optimal flexibility
- ▶ Seals absorb limited serviceable seismic movement
- ▶ Designed for renovation and surface mount installations
- ▶ Adaptable on any wall finish
- ▶ Easy to clean flush seals
- ▶ Standard and Custom seal colors available.
- All seals achieve UL Environmental Greenguard Gold Certification for ultra low VOC's
- ▶ Clear anodized finish
- ▶ Snap-fit design for easy on site assembly

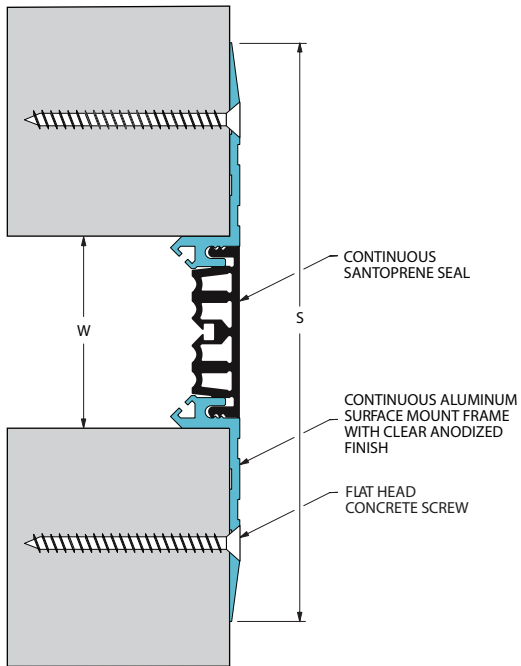
Application	System	W		H1		H2		S		B		Movement +/-			
		Joint Width		Frame Height 1		Height 2		Sightline		Blockout		Horizontal		Vertical	
		US	mm	US	mm	US	mm	US	mm	US	mm	US	mm	US	mm
Wall/Wall Ceiling/Ceiling	104-A07-025	1"	25	*	*	*	*	4 3/4"	121	*	*	1/4"	6	1/4"	6
	104-A07-038	1 1/2"	38	*	*	*	*	5 1/8"	130	*	*	3/8"	10	3/8"	10
	104-A07-050	2"	51	*	*	*	*	5 5/8"	143	*	*	1/2"	13	1/2"	13
	104-A07-075	3"	76	*	*	*	*	6 5/8"	168	*	*	3/4"	19	3/4"	19
Wall/Corner Wall/Ceiling	104-A09-025	1"	25	*	*	*	*	2 7/8"	73	*	*	1/4"	6	1/4"	6
	104-A09-038	1 1/2"	38	*	*	*	*	3 5/16"	84	*	*	3/8"	10	3/8"	10
	104-A09-050	2"	51	*	*	*	*	3 3/4"	95	*	*	1/2"	13	1/2"	13
	104-A09-075	3"	76	*	*	*	*	4 3/4"	121	*	*	3/4"	19	3/4"	19

IPC.814/REV.10

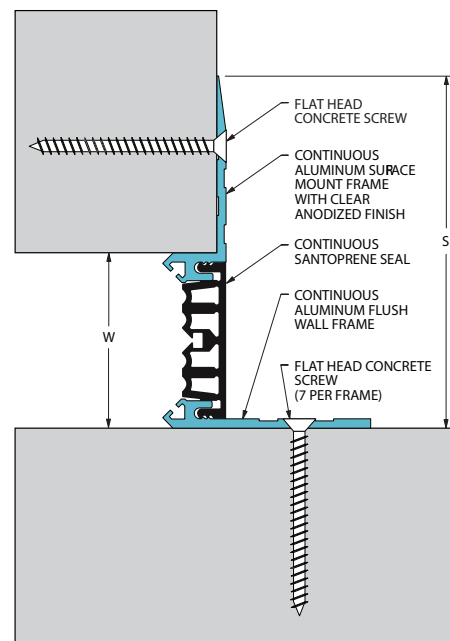
104 Series

Surface Mount Wall and Ceiling Systems

104-A07
Wall/Wall Ceiling/Ceiling
(2" (50mm) system shown)



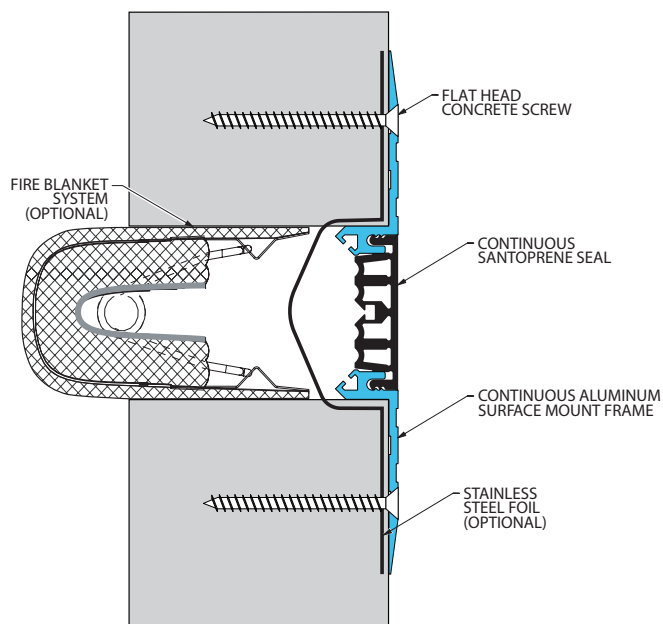
104-A09
Wall/Corner Wall/Ceiling
(2" (50mm) system shown)



104 Series

Options

Fire Blanket System
(104-A07-050 system shown)



Mineral Wool & Sealant Fire Barrier System
(104-A07-050 system shown)

