

# Installation Instructions

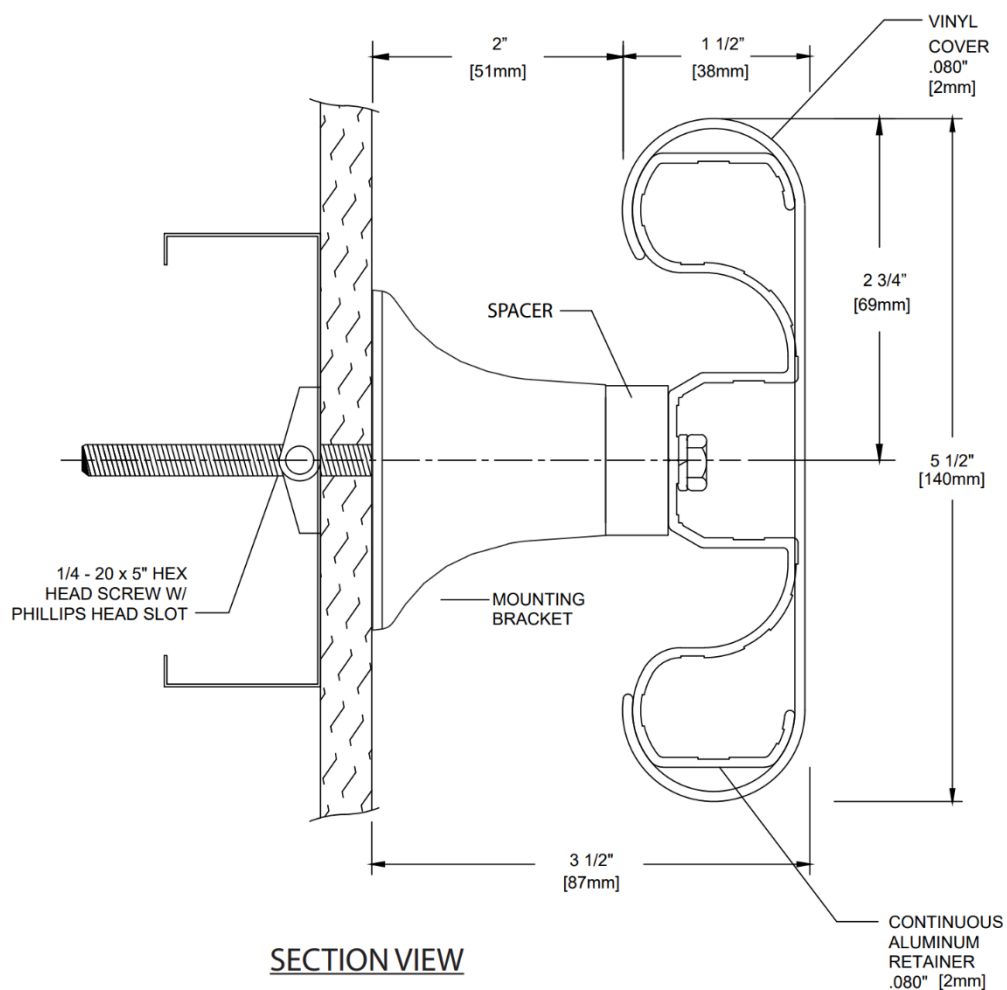
## 800 Series Handrail

### Important

1. Acclimate materials 24 hrs before installation. Maintain temperature-controlled environment after installation
2. Install in accordance with manufacturer's installation instructions. Failure to do so will void the warranty.

### Installation tips

1. Cut covers up to 1.6mm longer to ensure a tight fit.
2. Lubricate blades when cutting aluminium to reduce burrs.



### Recommended Tools

Safety Glasses, Tape Measure, 10mm socket for machine screw hex bolt, 11mm socket for wood screw hex bolt Level, Power Drill, Drill Bits – 6mm masonry (concrete/concrete block), Power Mitre Saw, 255mm Blade with 60-80 Carbide Tipped Teeth

# Installation Instructions

## 800 Series Handrail

### Components and fasteners



800A  
CONTINUOUS  
ALUMINUM RETAINER



1001  
MOUNTING BRACKET



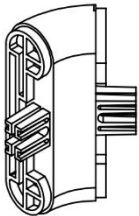
1001SP  
MOUNTING BRACKET  
SPACER



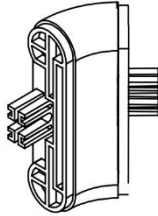
800V  
COVER



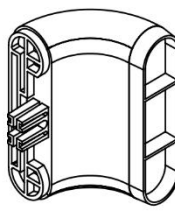
800HR  
REVEAL  
STANDARD ON  
800W, G2-800



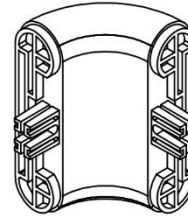
803135  
135 OUTSIDE  
CORNER



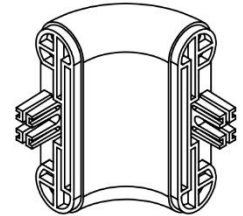
805135  
135 INSIDE  
CORNER



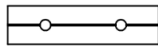
802SP  
HANDRAIL RETURN



803  
HANDRAIL OUTSIDE



805  
HANDRAIL INSIDE



804  
HANDRAIL SPLICE



1/4"  
LOCK WASHER  
SPRING REGULAR



1/4"-20  
FLANGED SCREW  
HEX NUT



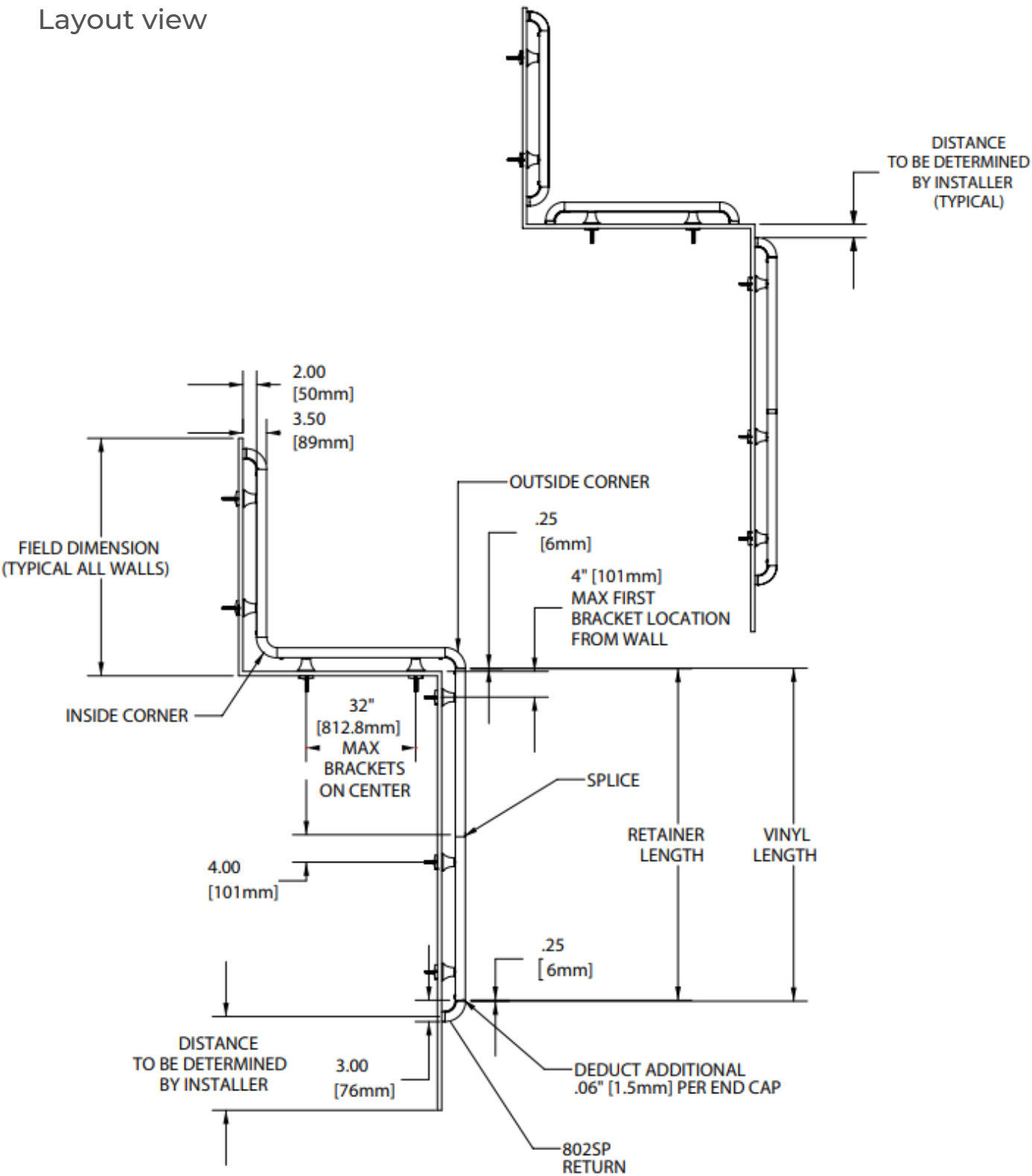
1/4"-20 X 1  
HEX WASHER  
SCREW

Wall Condition	Specified Fasteners
Steel Stud/Gypsum Wall	1/4-20 x 5" Phillips hex head Bolt with toggle wing and lock washer
Concrete/Concrete Block	1/4-20 x 5" Phillips hex head bolt with lead anchor and lock washer
Wood Stud/Gypsum Wall	1/4" x 5" Hex Head Wood Screw and lock washer
16 gauge steel Backer/Gypsum wall	#14 X 4" Indented hex washer, zink-plated TEK SCREW
Steel Stud or Metal Backer/Drywall (OSHDP)	1/4-20 x 5" Phillips hex head Bolt with lock washer and 1/4" Hilgi Toggler
Concrete/Concrete Block (OSHDP)	1/4" x 4" Torx Hex Washer Head Screw (Hilti Kwik-Con II) and lock washer
Wood Stud or Wood Backer/Gypsum Wall (OSHDP)	1/4" x 5" Hex Head Wood Screw and lock washer

# Installation Instructions

## 800 Series Handrail

Layout view

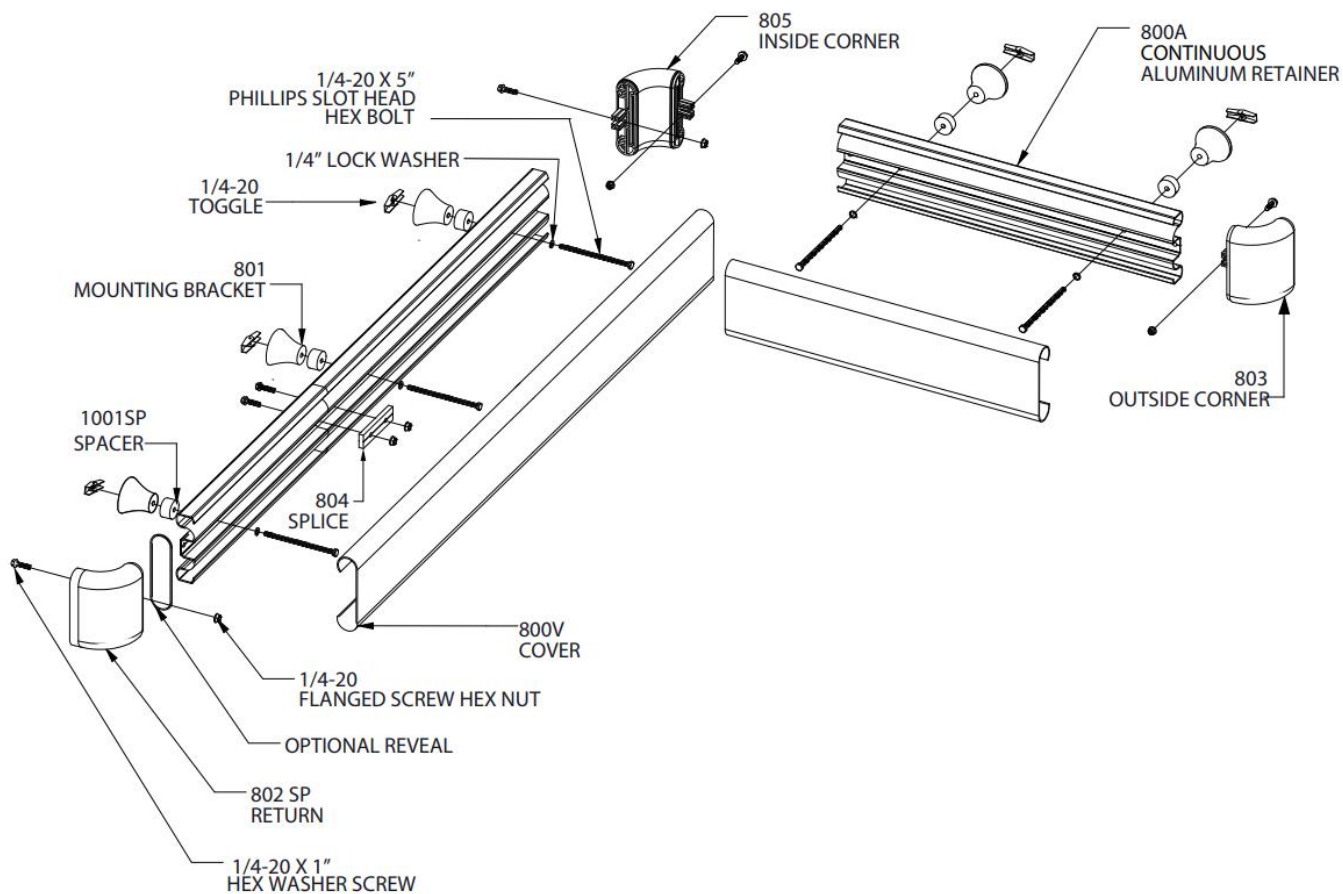


# Installation Instructions

## 800 Series Handrail

---

### Exploded view assembly



# Installation Instructions

## 800 Series Handrail

FIG. 1

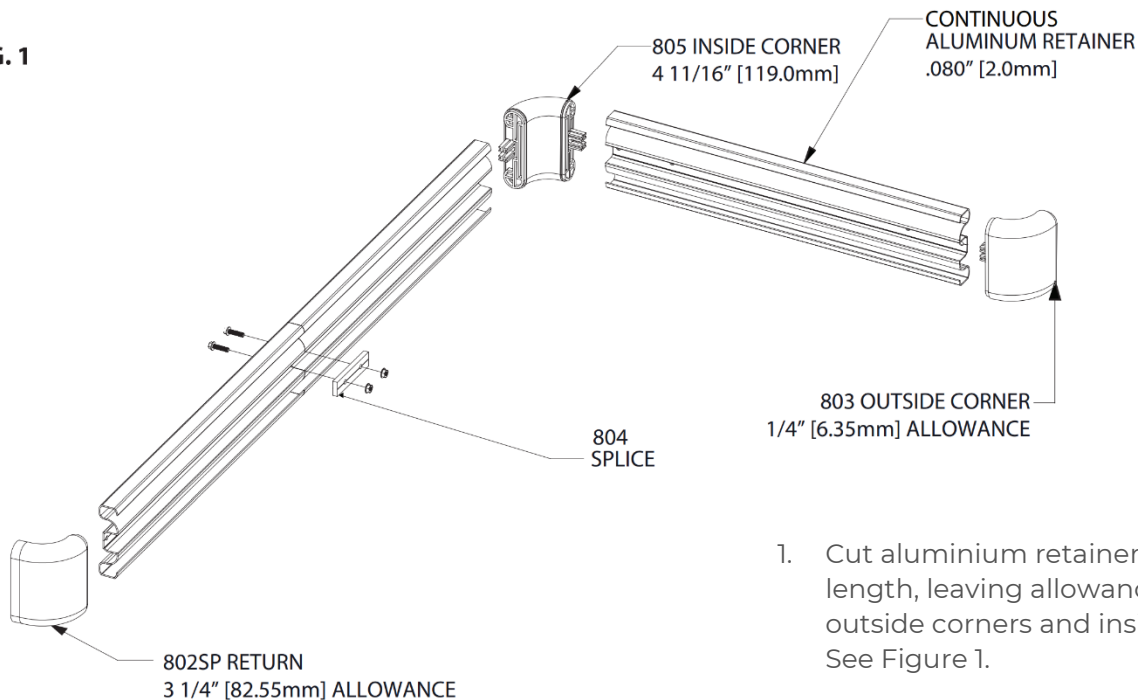
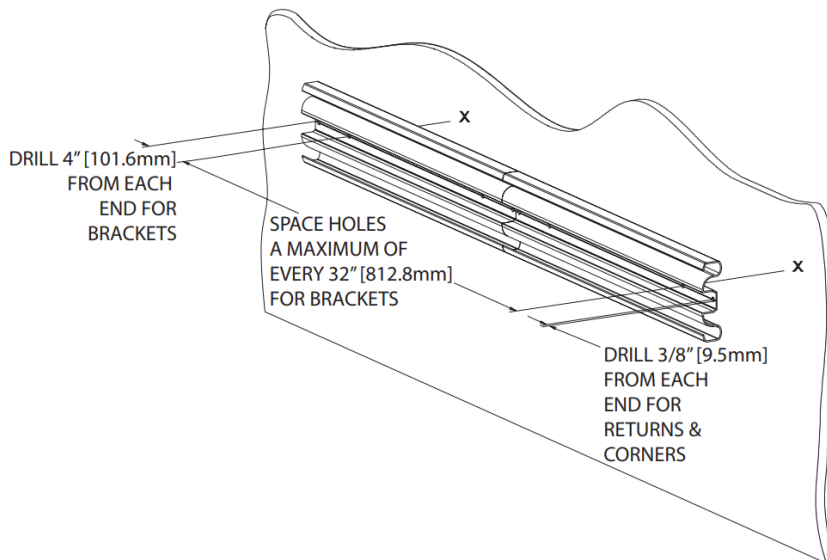


FIG. 2

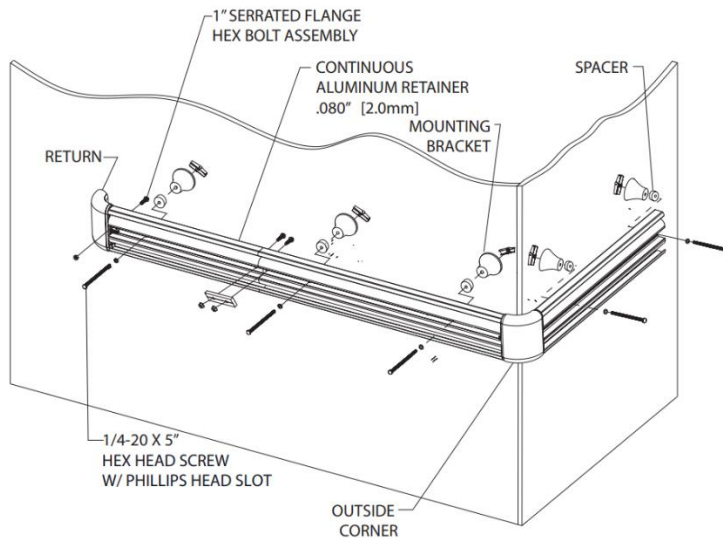


2. Drill holes in centreline of aluminium retainer for brackets, returns and corners using 6mm drill bit. Position aluminium retainer against wall at desired height allowing for returns and corners. Level and mark bracket holes on wall. Drill marked holes with 19mm drill bit for toggle bolts (drywall installation) or 13mm drill bit for lead anchor (concrete wall installation). See Figure 2.

# Installation Instructions

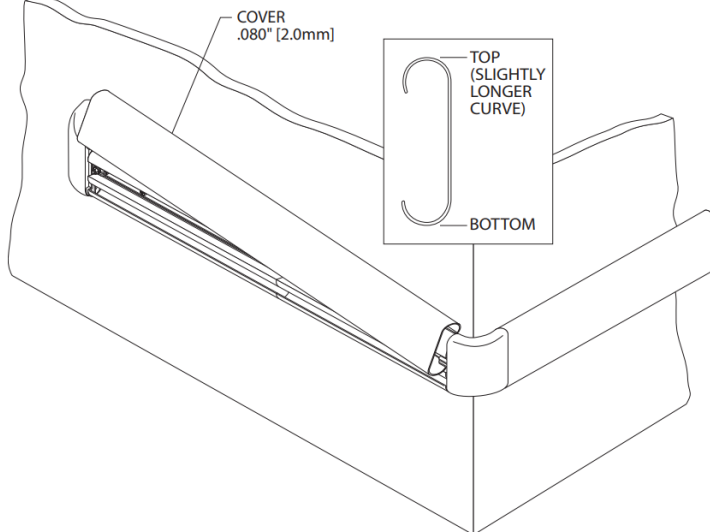
## 800 Series Handrail

FIG. 3



3. Attach returns and corners to retainer leaving a 1.5mm gap between returns/ corners and retainer to allow for adjustment. Loosely attach brackets with spacers to retainer. Mount on wall, level retainer and tighten screws to secure. See Figure 3.

FIG. 4



4. Cut cover to length between returns and/or corners. (Note: Distinct top and bottom for cover. Trim factory edges square before installation). Position cover on retainer and adjust returns and/or corners for a tight fit. Snap cover on retainer by starting at top and pivoting over the bottom of retainer. See Figure 4.

Note: For 855 Covers Only – When continuous runs are over 3m, covers should be installed in consecutive order using the numbers found on the back of covers. This ensures proper alignment of accent strip.