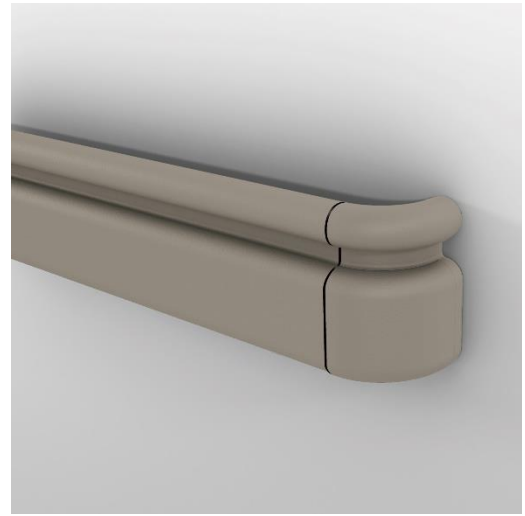
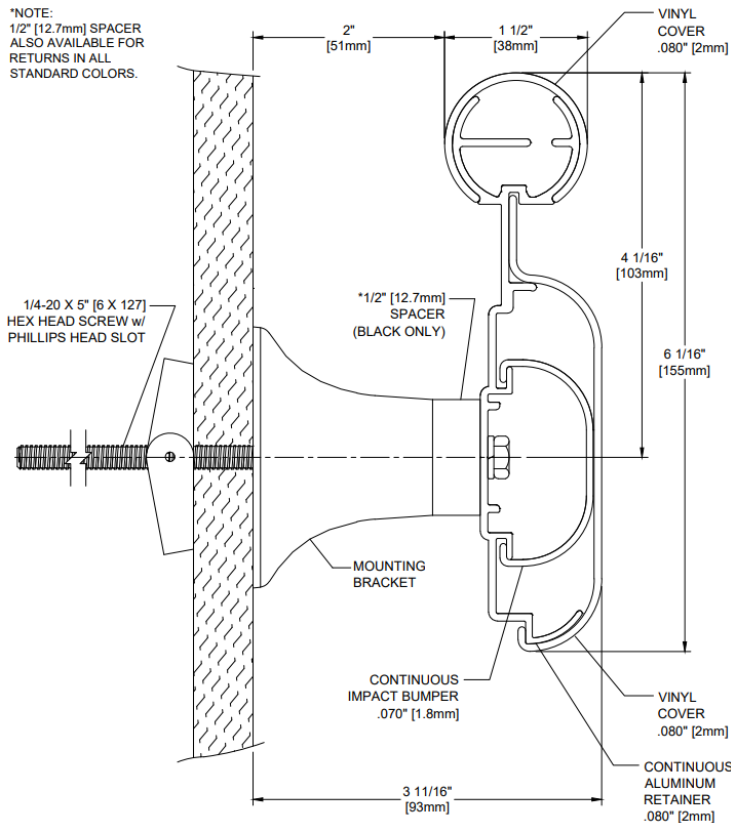


3100 Series

Handrail



- 155mm height x 38mm round gripping diameter, extends 92mm from the wall
- Includes internationally compliant spacers
- 3110VV - Solid colour handrail and integrated vinyl wall guard
- 3110VfV - Solid colour handrail and Faux-wood pattern integrated vinyl wall guard with black reveals for returns and corners.
- 3110FVV - Faux-wood pattern handrail and solid colour integrated vinyl wall guard with black reveals for returns and corners.
- 3110FVfV - Faux-wood pattern handrail and faux-wood pattern integrated vinyl wall guard with black reveals for returns and corners.
- 2mm thick, scratch and stain resistant rigid vinyl cover
- Mounted on a sturdy 2mm thick, continuous aluminium retainer
- Manufactured in 3.66m standard lengths
- Meets ADA and ANSI criteria
- All mounting fasteners are included with each order
- Meets the most rigorous standards and criteria of chemical emissions as prescribed by the GREENGUARD Environmental Institute
- Has been tested and meets GREENGUARD Environmental Institute's and the state of California's requirements for low emitting products as tested by Air Quality Sciences
- Has been tested and meets the GREENGUARD Children & School chemical emissions levels

3100 Series

Handrail

PART 1 GENERAL

1.01 SUMMARY

A. Handrail systems for pedestrian safety and wall protection

1.02 SECTIONS INCLUDES

A. 3110VV/3110VFFV/3110FVV/3110FVFFV Round handrail systems with integrated wall guard and internationally compliant spacers

1.03 REFERENCES

- A. American National Standards Institute (ANSI)
- B. American Society for Testing and Materials (ASTM)
- C. American with Disabilities Act (ADA)
- D. National Building Code of Canada (NBC)
- E. National Fire Protection Association (NFPA)
- F. Society of Automotive Engineers (SAE)
- G. Underwriters Laboratory (UL)
- H. Underwriters Laboratory of Canada (ULC)
- I. Uniform Building Code (UBC)

1.04 SYSTEM DESCRIPTION

A. Performance Requirements: Provide handrail system with integrated impact bumpers that conform to the following requirements of regulatory agencies and the quality control of IPC Door and Wall Protection Systems, InPro Corporation.

1. Fire Performance Characteristics: Provide UL Classified impact bumper conforming with NFPA Class A fire rating. Surface burning characteristics, as determined by UL-723 (ASTM E-84), shall be flame spread of 10 and smoke development of 350 - 450. Provide ULC (Canada) listed impact bumper conforming to the requirements of the National Building Code of Canada 2010, Subsection 3.1.13. Surface burning characteristics, as determined by CAN/ULC-S102.2, shall be flame spread of 15 and smoke developed of 35.
2. Self-Extinguishing: Provide impact bumpers with a CC1 classification, as tested in accordance with the procedures specified in ASTM D-635-74, Standard Test Method for Rate of Burning and/or Extent and Time of Burning of Self-Supporting Plastics in a Horizontal Position, as referenced in UBC 52-4-1988.
3. Impact Strength: Provide rigid vinyl profile materials that have an impact strength of 30.2 ft-lbs/inch of thickness as tested in accordance with the procedures specified in ASTM D-256-90b, Impact Resistance of Plastics.
4. Chemical and Stain Resistance: Provide impact bumpers that show resistance to stain when tested in accordance with applicable provisions of ASTM D-543.
5. GREENGUARD Certified: Provide GREENGUARD Certified material. Profiles shall meet the requirements of GREENGUARD Certification Standards for Low Emitting Products and GREENGUARD Product Emission Standard for Children & Schools.
6. Fungal and Bacterial Resistance: Provide rigid vinyl that does not support fungal or bacterial growth as tested in accordance with ASTM G-21 and ASTM G-22.
7. Colour Consistency: Provide components matched in accordance with SAE J-1545 - (Delta E)

with a colour difference no greater than 1.0 units using CIE Lab, CIE CMC, CIE LCh, Hunter Lab or similar colour space scale systems.

8. Code Compliance: Provide handrails that comply with all current ANSI and ADA requirements.

1.05 SUBMITTALS

- A. Product Data: Manufacturer's printed product data for each product indicated in this section.
- B. Detail Drawings: Mounting details with appropriate fasteners for specific project substrates.
- C. Samples: Verification samples of handrail, 381mm long, in full size profiles with one mounting bracket of each type and colour indicated.
- D. Manufacturer's Installation Instructions: Printed installation instructions for each handrail.

1.06 DELIVERY, STORAGE AND HANDLING

- A. Deliver materials in unopened factory packaging to the jobsite.
- B. Inspect materials at delivery to assure that specified products have been received.
- C. Store in original packaging in a climate-controlled environment away from direct sunlight.

1.07 WARRANTY

- A. Standard IPC limited lifetime warranty against material and manufacturing defects.

PART 2 PRODUCTS

2.01 SUPPLIER

A. Acculine Architectural Systems: 135-139 Northcorp Blvd, Broadmeadows VIC 3047, Telephone: (03) 9334 5911, www.acculine.com.au

2.02 MANUFACTURERS

- A. Acceptable Manufacturer: IPC Door and Wall Protection Systems, InPro Corporation PO Box 406 Muskego, WI 53150 USA Telephone 800-222-5556, Fax: 888-715-8407 Internet address: www.inprocorp.com
- B. Substitutions: Not permitted
- C. Provide all handrails and wall protection from a single manufacturer.

2.03 MANUFACTURED UNITS

- A. Handrail
 1. 3110VV Handrail, 155mm height x 38mm round gripping diameter, system extends 92mm from the wall. Integrated vinyl cover, 101mm high. Inner impact bumper, 57mm high.
 2. 3110VFFV Handrail, 155mm height x 38mm round gripping diameter, system extends 92mm from the wall. Integrated vinyl cover, 101mm high. Inner impact bumper, 57mm high. Wall guard shall have full wrap faux-wood pattern. Returns and corners include reveals.
 3. 3110FVV Handrail, 155mm height x 38mm round gripping diameter, system extends 92mm from the wall. Integrated vinyl cover, 101mm high. Inner impact bumper, 57mm high. Handrail shall have a full wrap faux-wood pattern. Returns and corners include reveals.
 4. 3110FVFFV Handrail, 155mm height x 38mm round gripping diameter, system extends 92mm from the wall. Integrated vinyl cover, 101mm high. Inner impact bumper, 57mm high. Handrail and wall guard shall have full wrap fauxwood pattern. Returns and corners include reveals.

2.04 MATERIALS

- A. Vinyl: Snap-on covers of 2mm thickness shall be extruded from chemical and stain resistant unplasticized polyvinyl chloride (uPVC) with the addition of impact modifiers. No plasticizers shall be added (plasticizers may aid in bacterial growth). Inner snap-on vinyl impact bumper of 1.8mm thickness shall be extruded from chemical and stain resistant unplasticized polyvinyl chloride (uPVC) with the addition of impact modifiers. No plasticizers shall be added (plasticizers may aid in bacterial growth). Accent strips when used shall be of polyvinyl chloride (PVC).
- B. Aluminium: Continuous aluminium retainer of 2mm thickness shall be fabricated from 6063-T5 aluminium, with a mill finish.

2.05 COMPONENTS

- A. Moulded returns, inside corners, outside corners, spacers and brackets shall be made of injection moulded thermoplastic.
- B. Moulded reveals shall have a smooth finish and shall be black.
- C. Fasteners: All mounting systems accessories appropriate for substrates indicated on the drawings shall be provided.

2.06 FINISHES

- A. Vinyl Covers: Colour of the vinyl cover to be selected, by the architect, from the IPC finish selection. Surface shall have a pebblette texture.
- B. Inner Impact Bumper: Colour of the inner impact bumper to be black.
- C. Moulded Components: Returns, inside corners and outside corners shall be of a colour and texture matching the vinyl covers.
- D. Moulded Bracket: Shall be a solid colour to match or compliment the handrail. Bracket spacers shall be black. Surface shall have a pebblette texture.

PART 3 EXECUTION

3.01 INSTALLERS

A. Installer should be familiar with the installation of fine finished wood products.

3.02 EXAMINATION

- A. Examine areas and conditions in which handrail will be installed.
 1. Complete all finishing operations, including painting, before beginning installation of handrail system materials.
 2. Wall surface shall be dry and free from dirt, grease and loose paint.

3.03 PREPARATION

A. General: Prior to installation, clean substrate to remove dust, debris and loose particles.

3.04 INSTALLATION

A. General: Locate the handrail as indicated on the approved detail drawing for the appropriate substrate and in compliance with the IPC installation instructions. Install handrail level and plumb at the height indicated on the drawings.

3.05 CLEANING

A. At completion of the installation, clean surfaces in accordance with the IPC clean-up and maintenance instructions.