

Installation Instructions

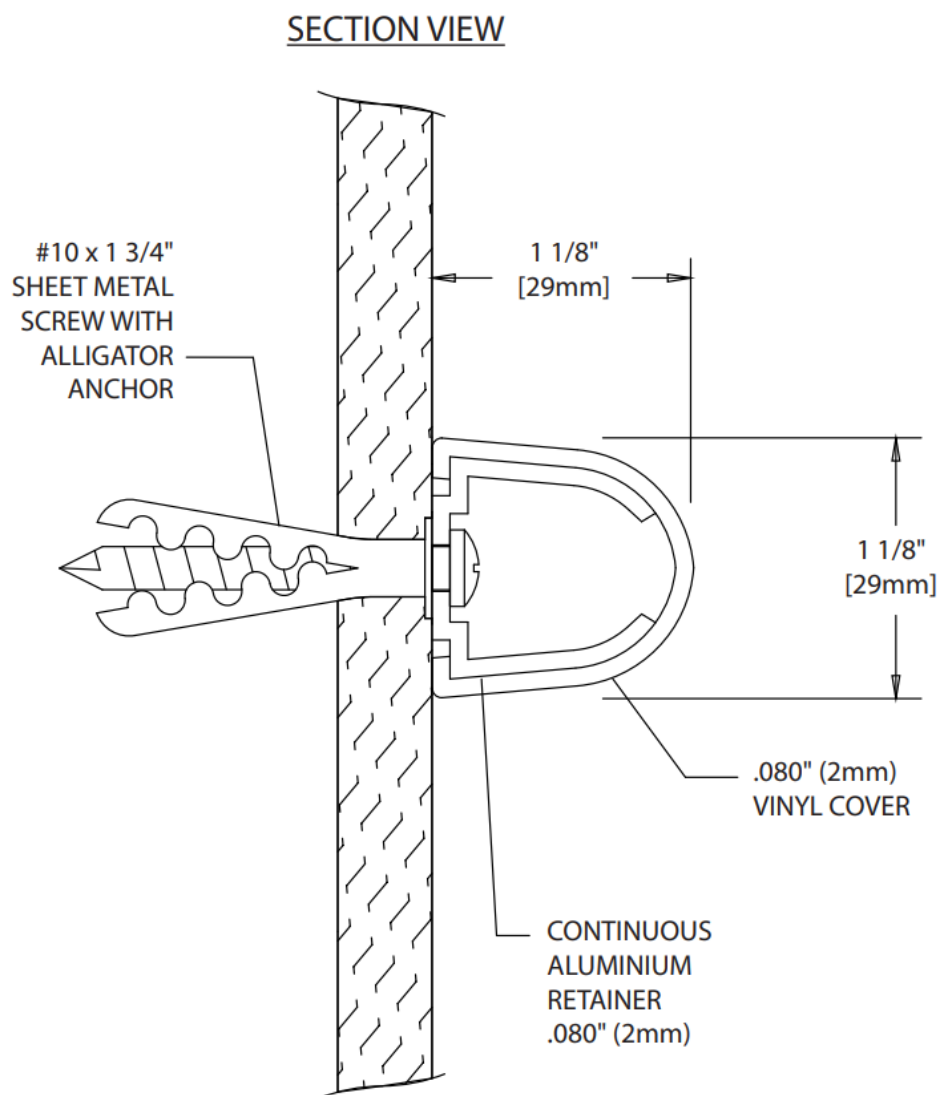
200 Series Wall Guard

Important

1. Acclimate materials 24 hrs before installation. Maintain temperature-controlled environment after installation
2. Install in accordance with manufacturer's installation instructions. Failure to do so will void the warranty.

Installation tips

1. Cut covers up to 1.6mm longer to ensure a tight fit.
2. Lubricate blades when cutting aluminium to reduce burrs.



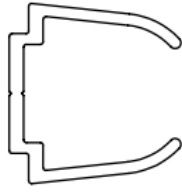
Recommended Tools

Safety Glasses, Tape Measure, 9mm socket for machine screw hex bolt, 11mm socket for wood screw hex bolt Level, Power Drill, Drill Bits – 6mm masonry (concrete/concrete block), Power Mitre Saw, 254mm Blade with 60-80 Carbide Tipped Teeth

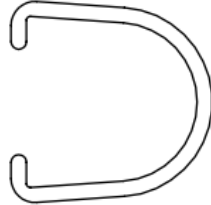
Installation Instructions

200 Series Wall Guard

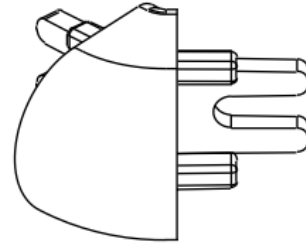
COMPONENTS AND FASTENERS



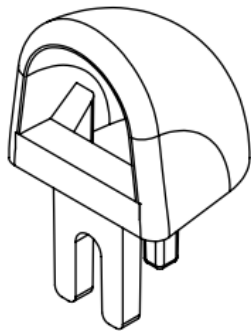
200
CONTINUOUS
METAL RETAINER



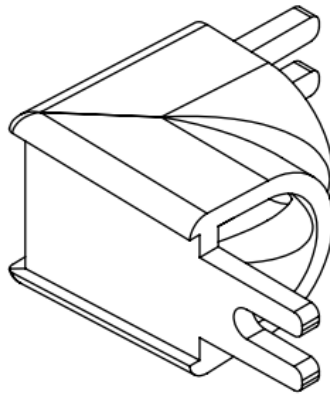
200V
VINYL COVER



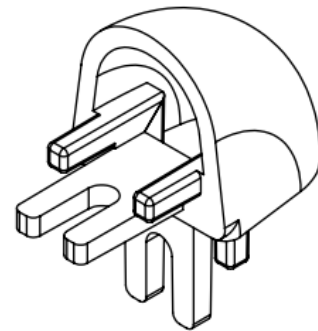
202135
OUTSIDE CORNER
135°



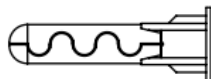
201
END CAP



207
INSIDE CORNER



202
OUTSIDE CORNER



1/4"
ALLIGATOR
ANCHOR



#10 x 1 3/4"
PHILLIPS PAN HEAD
SHEET METAL SCREW



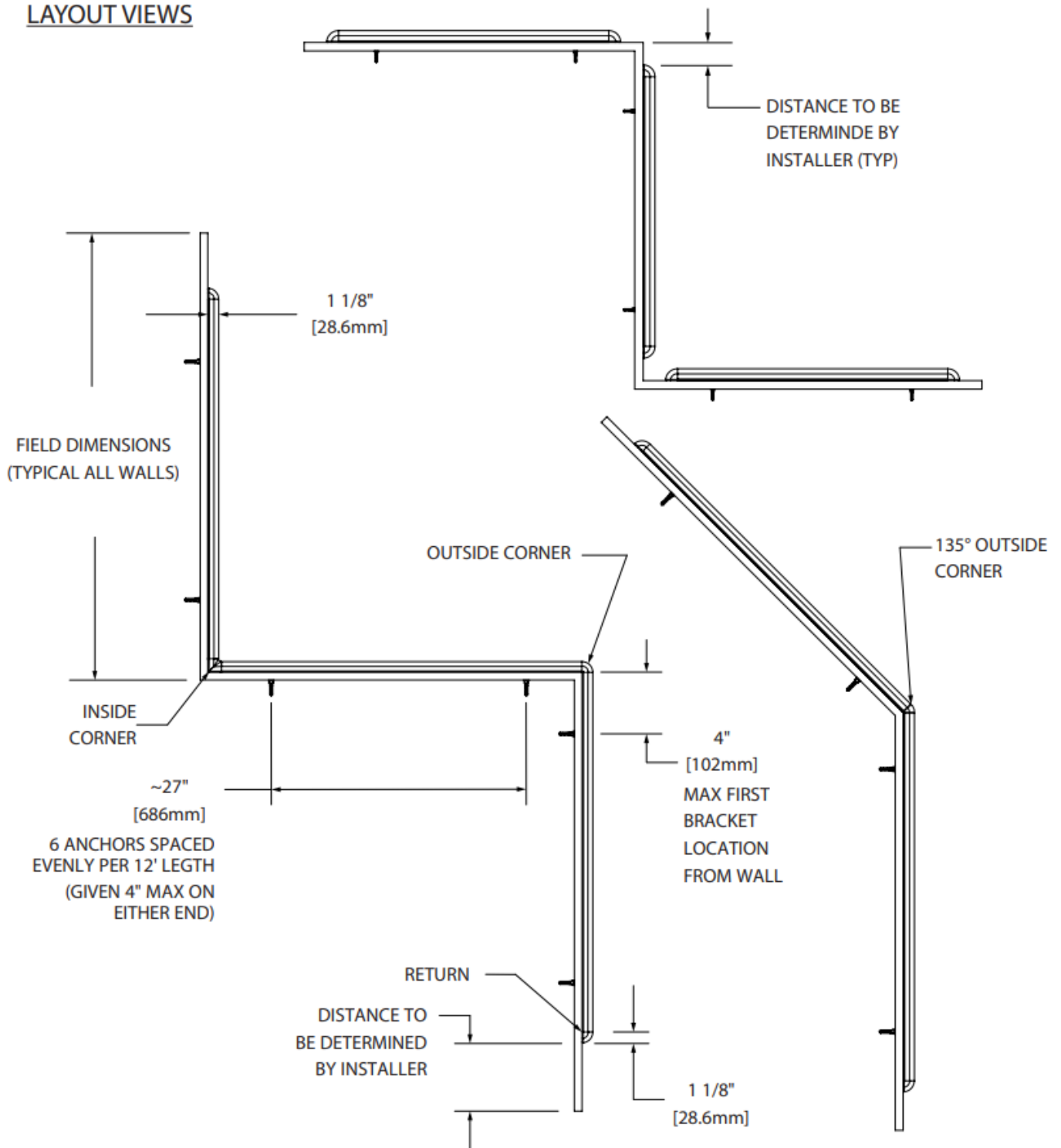
#8 x 1 1/2"
PHILLIPS INDENTED HEX
WASHER SELF DRILLING

Wall Condition	Specified Fasteners
Profile Hardware Kit	#10 x 1 3/4" Phillips Pan Head Sheet Metal Screw and 1/4" Alligator Anchor x6
Corner Hardware Kit - Concrete	#10 x 1 3/4" Phillips Pan Head Sheet Metal Screw and 1/4" Alligator Anchor x2
Corner Hardware Kit - Drywall	#8 x 1 1/2" Phillips Indented Hex Washer Self Drilling Screw

Installation Instructions

200 Series Wall Guard

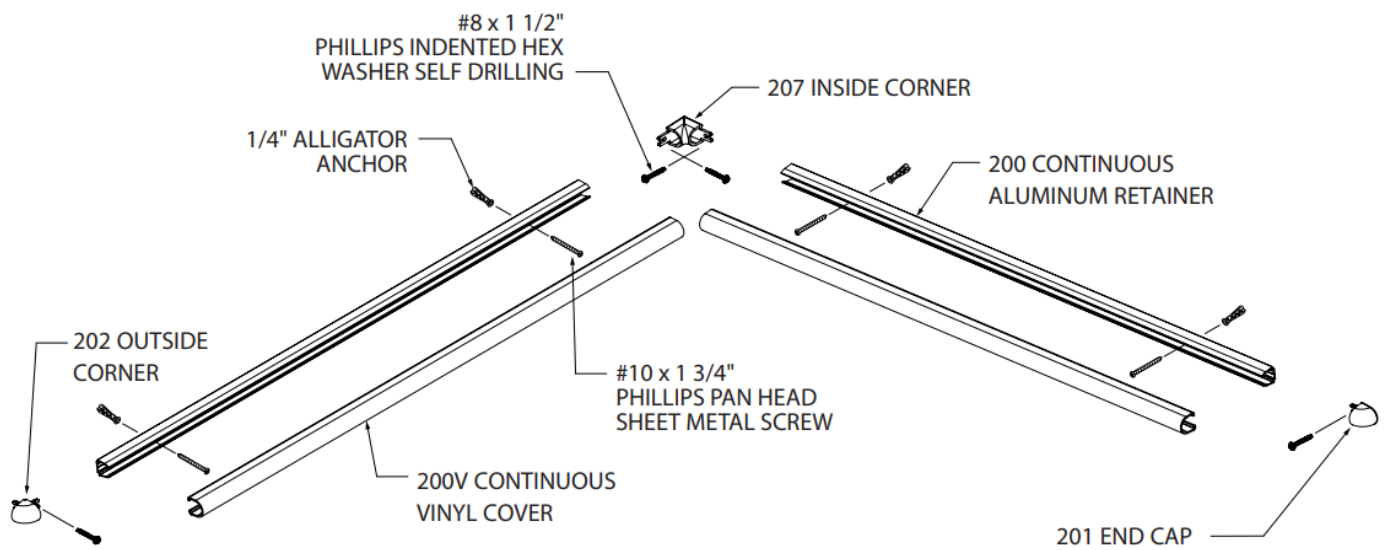
LAYOUT VIEWS



Installation Instructions

200 Series Wall Guard

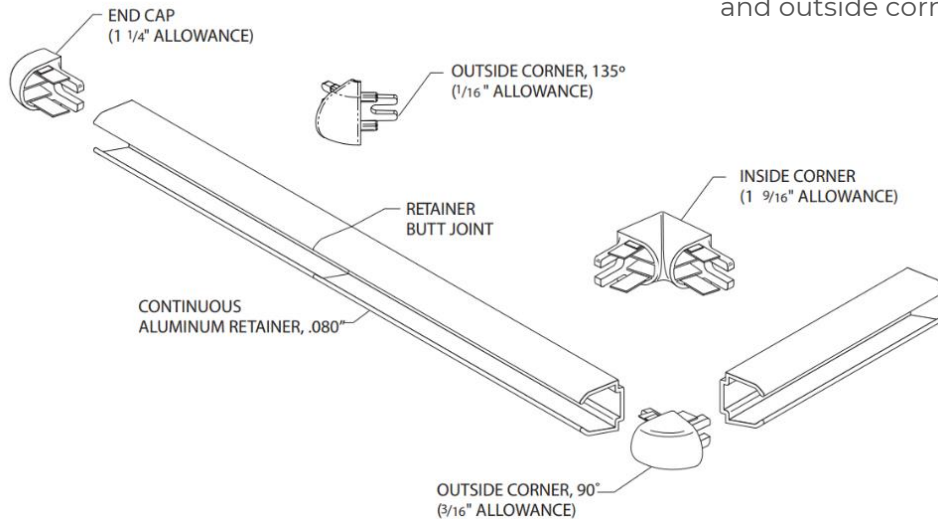
EXPLODED ASSEMBLY



Installation Instructions

200 Series Wall Guard

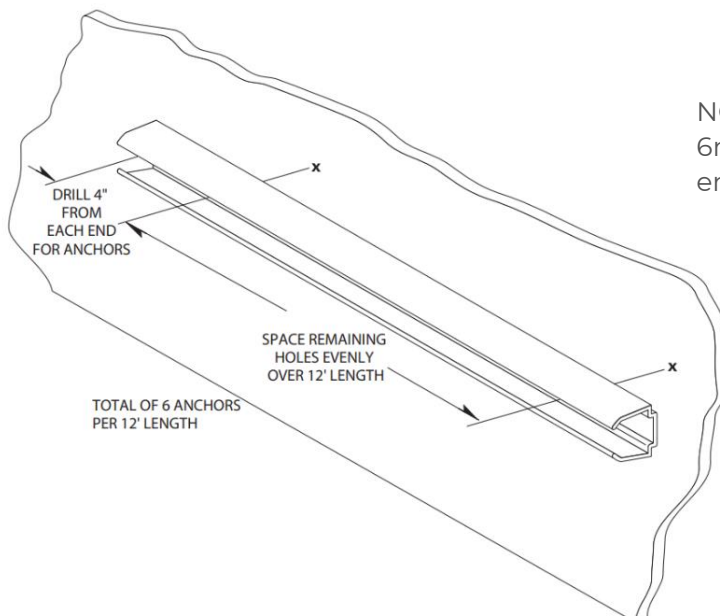
FIG. 1



Please read all instructions before installing wall guard.

1. Cut aluminium retainer to desired length, leaving allowance for end caps, inside corners and outside corners. See Figure 1.

FIG. 2



2. Drill holes in centreline of retainer using 6mm drill bit. Position retainer on wall allowing for end caps/ corners. Level and mark holes. See Figure 2.

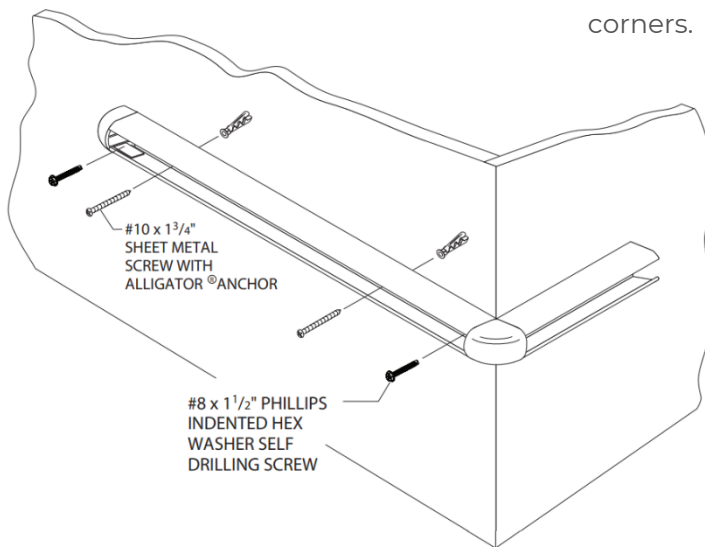
NOTE: For concrete or brick wall installation, drill 6mm holes 10mm from each end of retainer for end caps/corners.

Installation Instructions

200 Series Wall Guard

3. Drill marked holes on wall using a 6mm drill bit and position Alligator anchors into holes. Mount retainer on wall and tighten screws to secure. Slide end caps and corners onto the retainer and secure, leaving a 1.5mm gap between end caps/corners and retainer to allow for adjustment. See Figure 3.

FIG. 3



NOTE: For concrete or brick wall installation, use #10 x 44mm Phillips pan head screws to secure end caps and corners.

4. Cut the cover to length between end caps and/or corners. (Note: Trim factory edges square before installation). Position cover on retainer and adjust end caps and/or corners for a tight fit. Starting at one end, push cover onto retainer until it snaps into place. See Figure 4.

FIG. 4

