

Installation Instructions

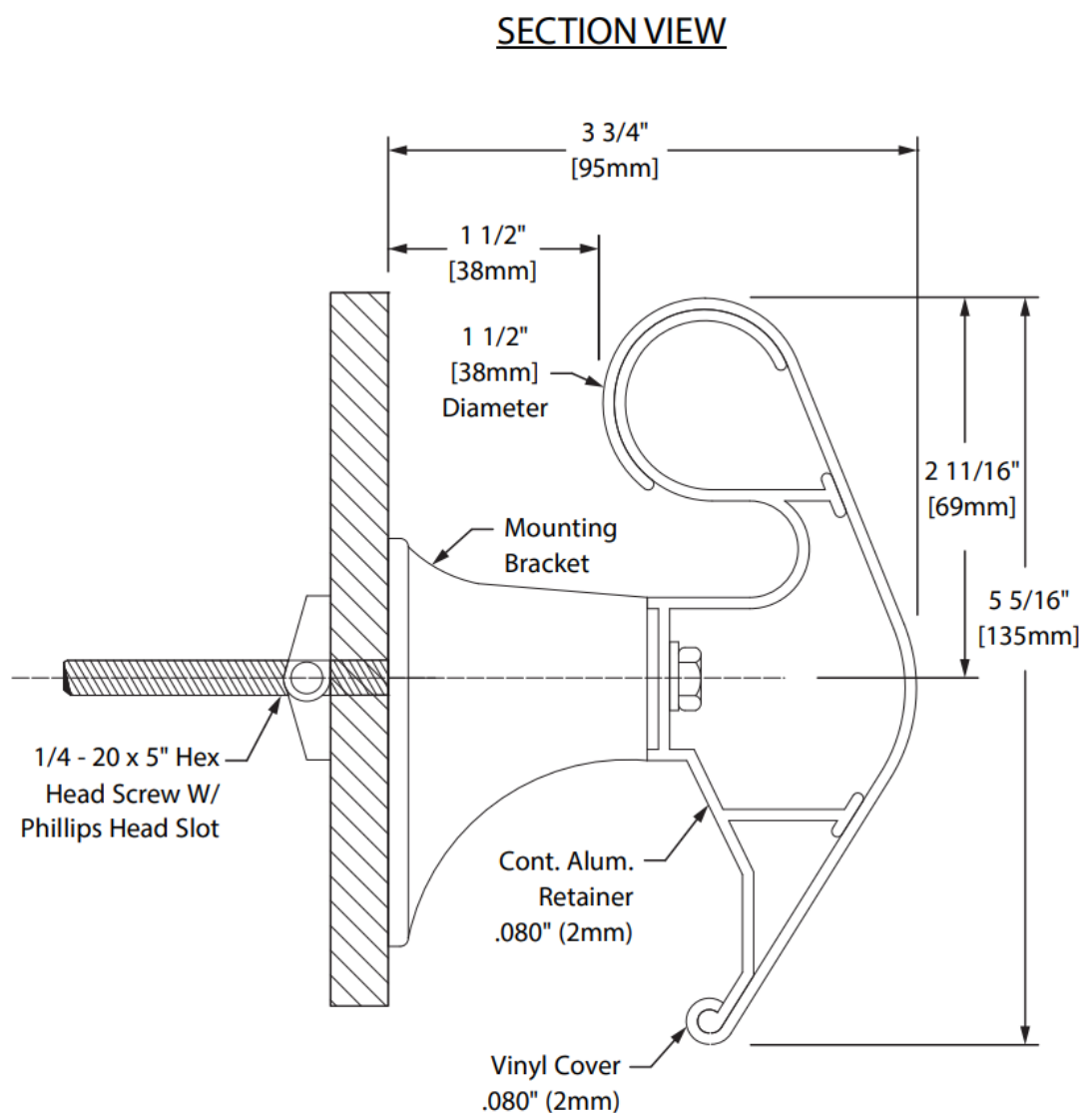
1100 Series Handrail

Important

1. Acclimate materials 24 hrs before installation. Maintain temperature-controlled environment after installation
2. Install in accordance with manufacturer's installation instructions. Failure to do so will void the warranty.

Installation tips

1. Cut covers up to 1.6mm longer to ensure a tight fit.
2. Lubricate blades when cutting aluminium to reduce burrs.



Recommended Tools

Safety Glasses, Tape Measure, 9.5mm socket for machine screw hex bolt, 11mm socket for wood screw hex bolt Level, Power Drill, Drill Bits – 6mm masonry (concrete/concrete block), Power Mitre Saw, 254mm Blade with 60-80 Carbide Tipped Teeth

Installation Instructions

1100 Series Handrail

Components and fasteners



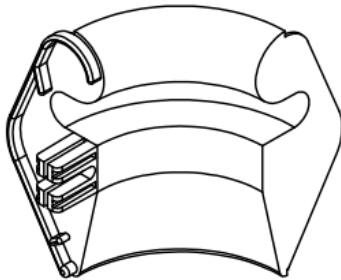
1100A
CONTINUOUS
ALUMINUM RETAINER



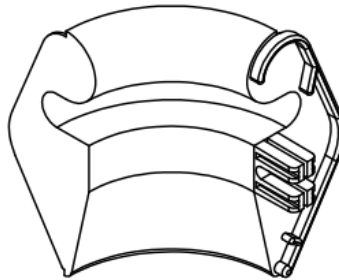
801
MOUNTING
BRACKET



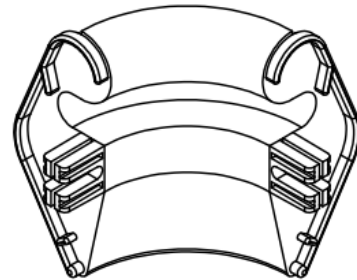
1100V
VINYL
COVER



1102
LEFT RETURN



1103
RIGHT RETURN



1104
OUTSIDE CORNER



804-910-SPL
SPLICE



1/4"
LOCK WASHER
SPRING REGULAR



1/4" - 20
FLANGED SCREW
HEX NUT



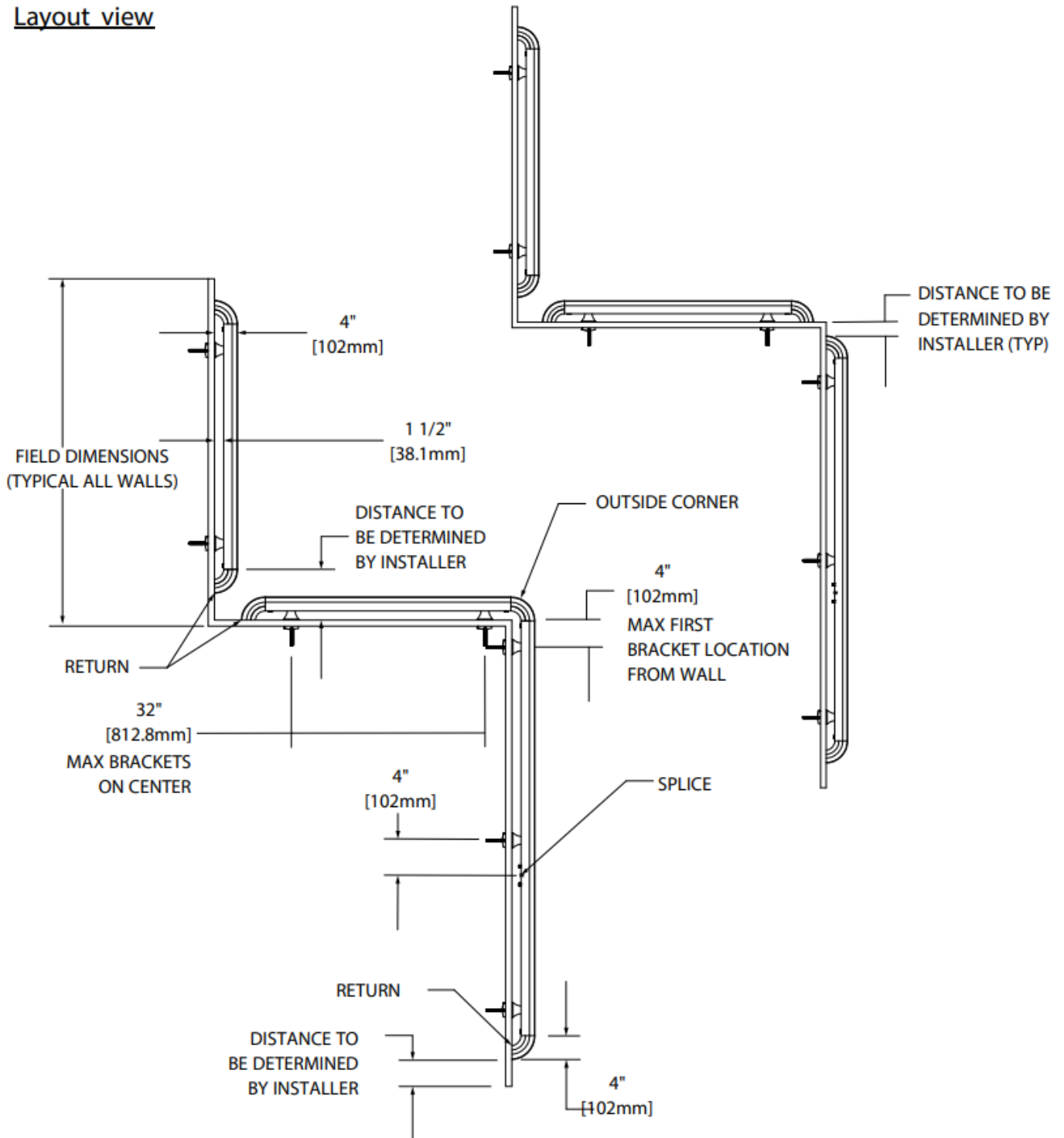
1/4" - 20
HEX WASHER
SCREW

Wall Condition	Specified Fasteners
Steel Stud/Gypsum Wall	1/4-20 x 5" Phillips hex head Bolt with toggle wing and lock washer
Concrete/Concrete Block	1/4-20 x 5" Phillips hex head bolt with lead anchor and lock washer
Wood Stud/Gypsum Wall	1/4" x 5" Hex Head Wood Screw and lock washer
16 gauge steel Backer/Gypsum wall	#14 X 4" Indented hex washer, zink-plated TEK SCREW
Steel Stud or Metal Backer/Drywall (OSHPD)	1/4-20 x 5" Phillips hex head Bolt with lock washer and 1/4" Hilti Toggler
Concrete/Concrete Block (OSHPD)	1/4" x 4" Torx Hex Washer Head Screw (Hilti Kwik-Con II) and lock washer
Wood Stud or Wood Backer/Gypsum Wall (OSHPD)	1/4" x 5" Hex Head Wood Screw and lock washer

Installation Instructions

1100 Series Handrail

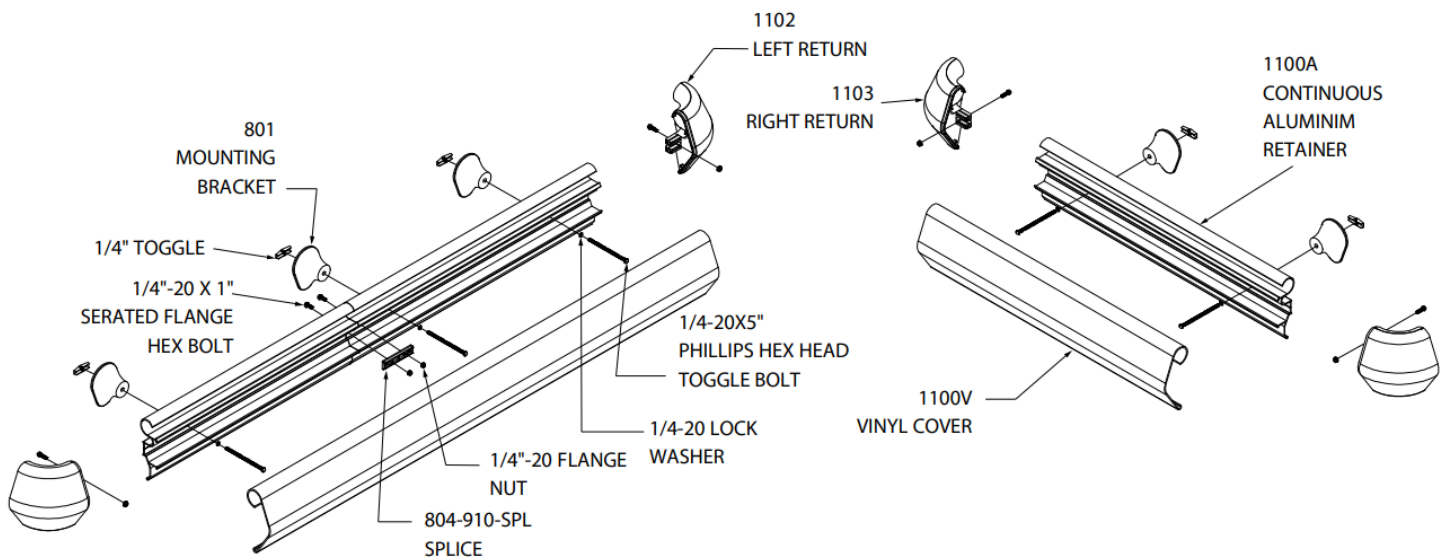
Layout view



Installation Instructions

1100 Series Handrail

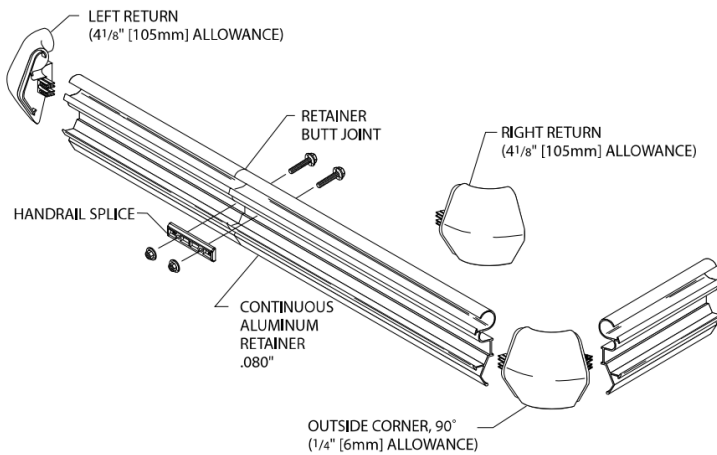
Exploded view assembly



Installation Instructions

1100 Series Handrail

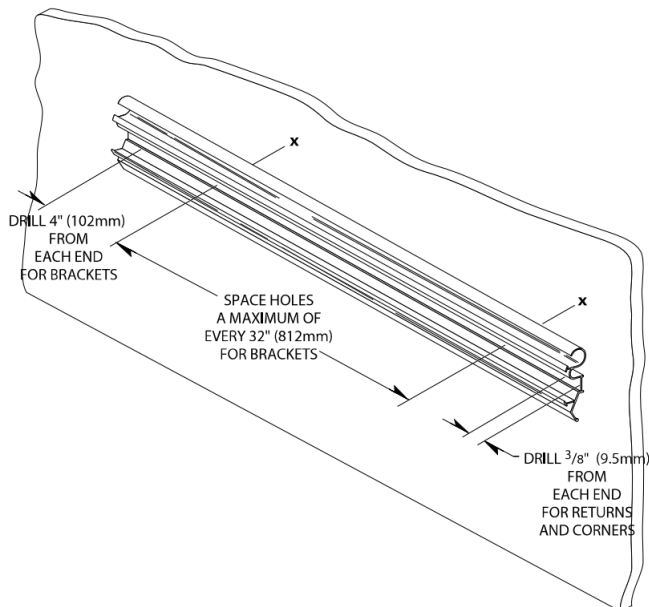
FIG. 1



Please read all instructions before installing handrail.

1. Cut aluminium retainer to desired length, leaving allowance for returns and outside corners.
See Figure 1.

FIG. 2

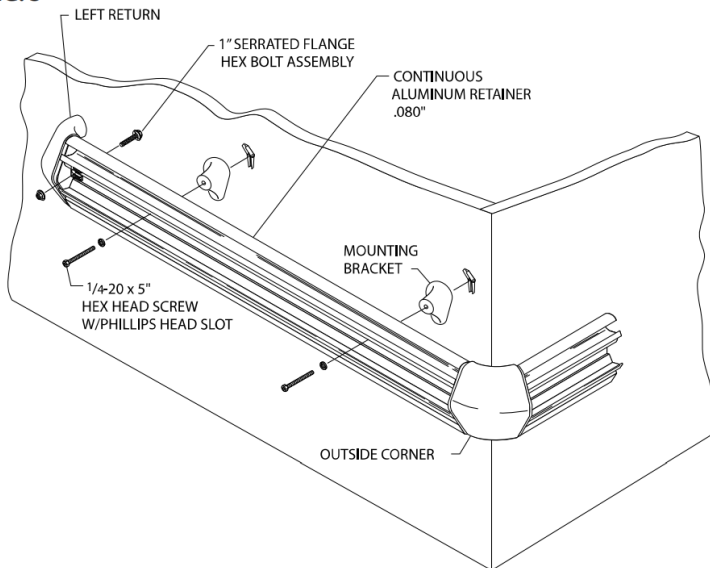


3. Drill holes in centreline of aluminium retainer for brackets, returns, corners and splices using a 6mm drill bit. Position aluminium retainer against wall at desired height allowing for returns and corners. Level and mark bracket holes on wall. Drill marked holes with 19mm drill bit for toggle bolts (drywall installation) or 13mm drill bit for lead anchor (concrete wall installation). See Figure 2.

Installation Instructions

T100 Series Handrail

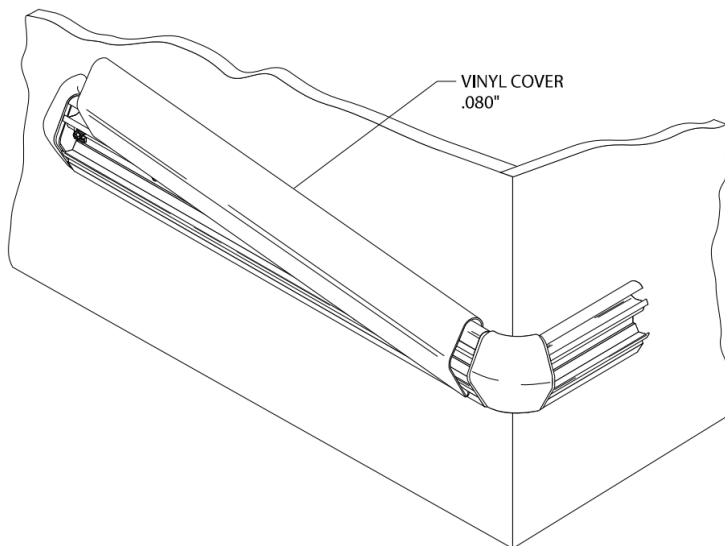
FIG. 3



4. Attach returns and corners to retainer leaving a 1.5mm gap between returns/corners and retainer to allow for adjustment. Loosely attach brackets to retainer. Mount on wall, level retainer and tighten screws to secure. See Figure 3.
 - a. For long runs of handrail, secure each section of aluminium retainer to the next with the supplied splice piece.

NOTE: Make sure you install the splice with side "A" facing out.

FIG. 4



4. Cut vinyl cover to length between returns and/or corners. (Note: Trim factory edges square before installation). Position cover on retainer and adjust returns and/or corners for a tight fit. Snap cover on retainer by starting at top and pivoting over the bottom of retainer. See Figure 4.