

300E Series

A07 - Exterior Wall to Wall or Exterior Ceiling to Ceiling

A09 - Exterior Wall to Corner or Exterior Wall to Ceiling



Product Guide



Thermal



Exterior



Interior



Fire Rated
Option



Vapor Barrier
Option



Seismic

- ▶ Capable of 50% +- multi-directional seismic movement
- ▶ 5/8" frame designed for both surface and recessed mounting
- ▶ Snap-fit cover design addresses aesthetics, hidden hardware for security and easy on-site assembly
- ▶ Continuous Santoprene gaskets isolate coverplate from face frames which act as a weatherseal and noise dampener
- ▶ Moisture barrier included with system
- ▶ Standard finish: Clear Anodized Aluminum
- ▶ Secondary finish options available

Application	System	W		H1		H2		S		B		Movement +/-			
		Joint Width		Frame Height 1		Height 2		Sightline		Blockout		Horizontal		Vertical	
		US	mm	US	mm	US	mm	US	mm	US	mm	US	mm	US	mm
Wall/Wall Ceiling/Ceiling	300E-A07-025	1"	25	5/8"	16	*	*	5"	127	2"	51	1/2"	13	1/4"	6
	300E-A07-050	2"	51	5/8"	16	*	*	6"	152	2"	51	1"	25	1/2"	13
	300E-A07-075	3"	76	5/8"	16	*	*	9"	229	3"	76	1 1/2"	38	3/4"	19
	300E-A07-100	4"	102	5/8"	16	*	*	10"	254	3"	76	2"	51	1"	25
	300E-A07-150	6"	152	5/8"	16	*	*	14"	356	4"	102	3"	76	1 1/2"	38
	300E-A07-200	8"	203	5/8"	16	*	*	18"	458	5"	127	4"	102	2"	51
	300E-A07-250	10"	254	5/8"	16	*	*	24"	610	7"	178	5"	127	2 1/2"	64
300E-A07-300	12"	305	5/8"	16	*	*	26"	661	7"	178	6"	152	3"	76	
Wall/Corner Wall/Ceiling	300E-A09-025	1"	25	5/8"	16	*	*	2 3/8"	60	2"	51	1/4"	6	3/4"	19
	300E-A09-050	2"	51	5/8"	16	*	*	3 3/8"	85	2"	51	1/2"	13	3/4"	19
	300E-A09-075	3"	76	5/8"	16	*	*	5 3/8"	137	3"	76	3/4"	19	7/8"	22
	300E-A09-100	4"	102	5/8"	16	*	*	6 3/8"	163	3"	76	1"	25	1"	25
	300E-A09-150	6"	152	5/8"	16	*	*	9 3/8"	238	4"	102	1 1/2"	38	1 1/4"	32
	300E-A09-200	8"	203	5/8"	16	*	*	12 3/8"	314	5"	127	2"	51	1 1/2"	38
	300E-A09-250	10"	254	5/8"	16	*	*	16 3/8"	416	7"	178	2 1/2"	64	2"	51
300E-A09-300	12"	305	5/8"	16	*	*	18 3/8"	467	7"	178	3"	76	2 1/2"	64	

*May be available in larger widths, please contact InPro Corporation for more details.

IPC.2010/REV.4

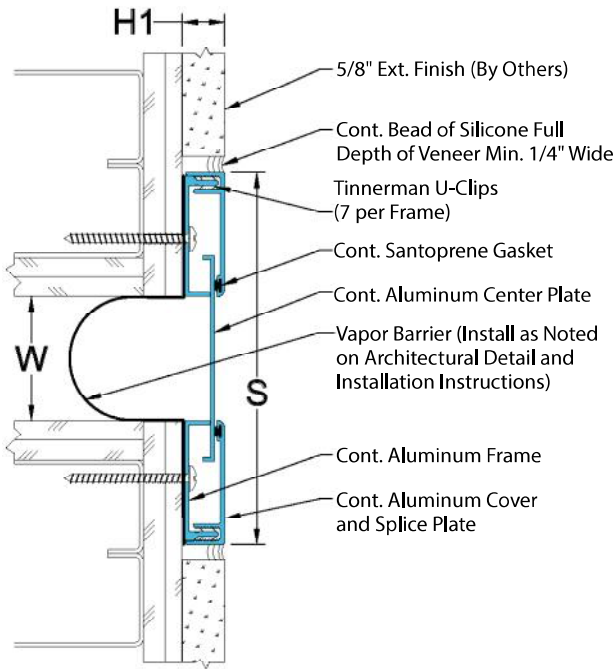
Inprocorp.com • 800.222.5556 • 262.679.9010
World Headquarters S80 W18766 Apollo Drive, Muskego, WI 53150 USA

JOINTMASTER®
EXPANSION JOINT SYSTEMS
A DIVISION OF INPRO®

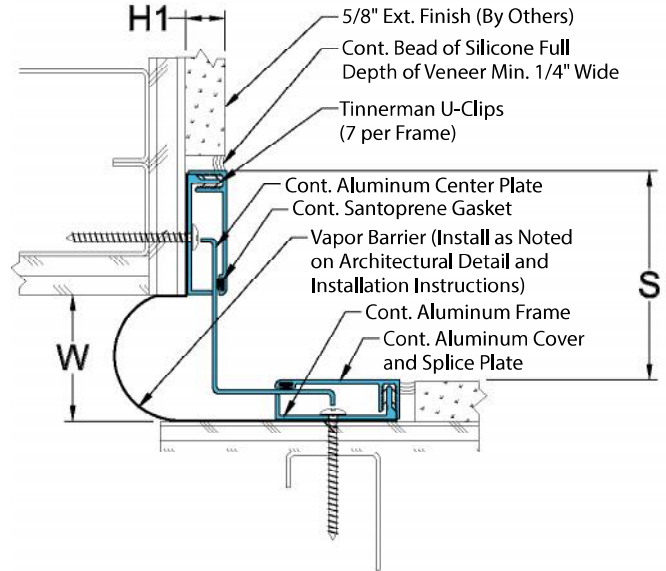
300E Series

Wall and Ceiling Systems

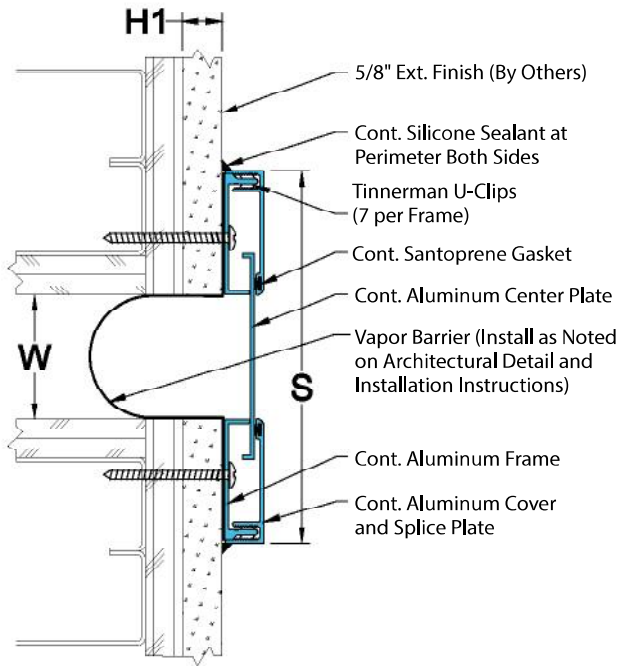
300-A07 Wall/Wall or Ceiling/Ceiling
(2" (50mm) recessed system shown)



300-A09 Wall/Corner or Ceiling/Corner
(2" (50mm) recessed system shown)



300-A07 Wall/Wall or Ceiling/Ceiling
(2" (50mm) surface mount system shown)



300-A09 Wall/Corner or Ceiling/Corner
(2" (50mm) surface mount system shown)

