

SR-200-38A2

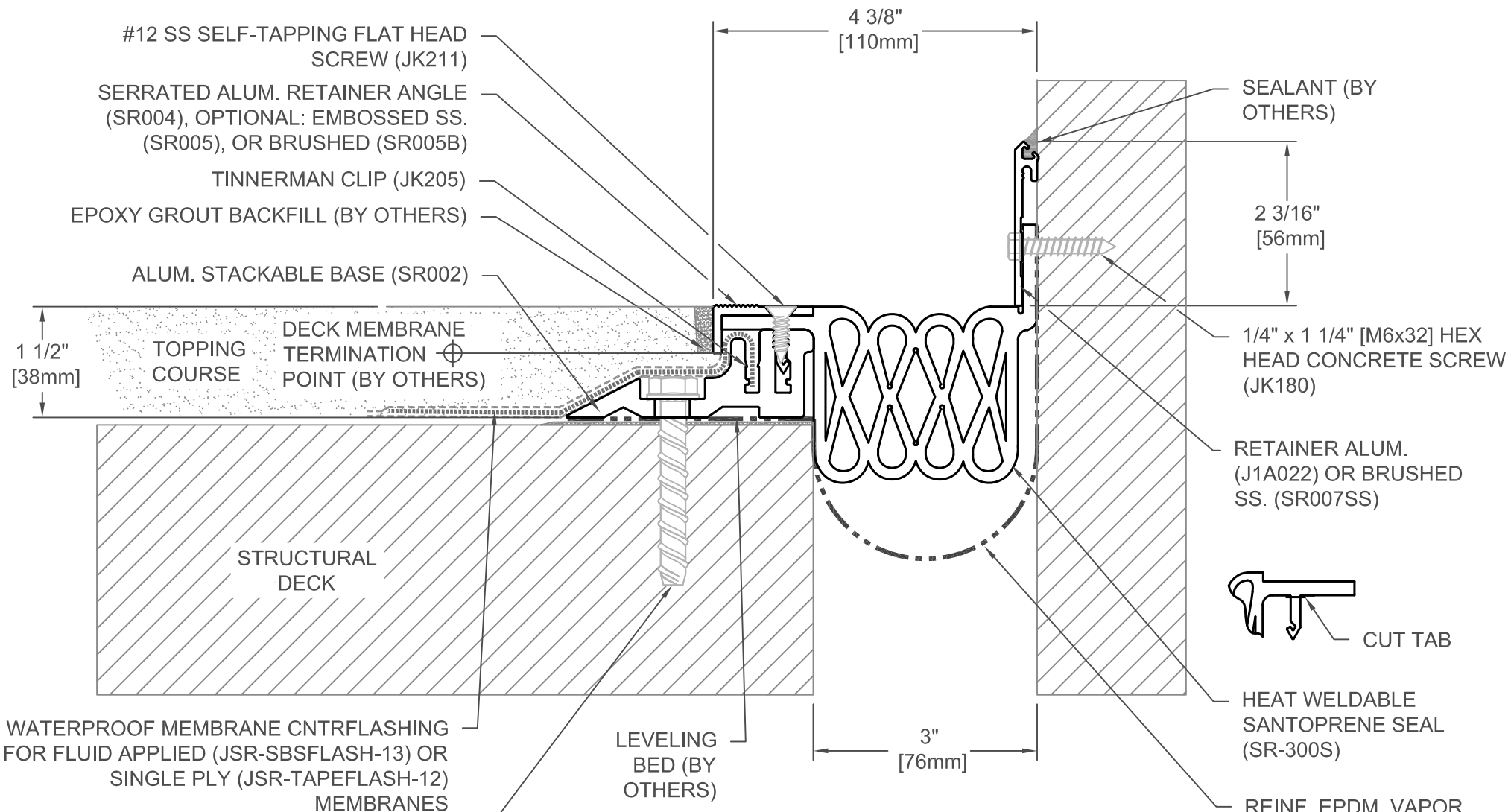
| JOINT WIDTH | | MOVEMENT ± | | | |
|-------------|----|------------|----|----|----|
| US | mm | US | mm | US | mm |
| 2" | 51 | 1" | 25 | 3" | 75 |

| |
|--------------|
| FINISH: MILL |
| PROJECT: |
| CUSTOMER: |
| LOCATION: |

APPLICATION-
EXTERIOR COMPRESSION SEAL W/ ALUM. FRAMES

| | |
|--------|--------------|
| DATE: | 7/8/17 |
| SCALE: | 1:2 |
| DOC: | CADJM.191/R3 |





SR-300-38A2

| JOINT WIDTH | | MOVEMENT ± | | | |
|-------------|----|------------|----|---------|-----|
| | | MINIMUM | | MAXIMUM | |
| US | mm | US | mm | US | mm |
| 3" | 76 | 1 1/2" | 38 | 4 1/2" | 114 |

3/8" [10mm] HEX HEAD CONCRETE SCREW ANCHOR (JK173) (7 PER FRAME @ 18" [457mm])

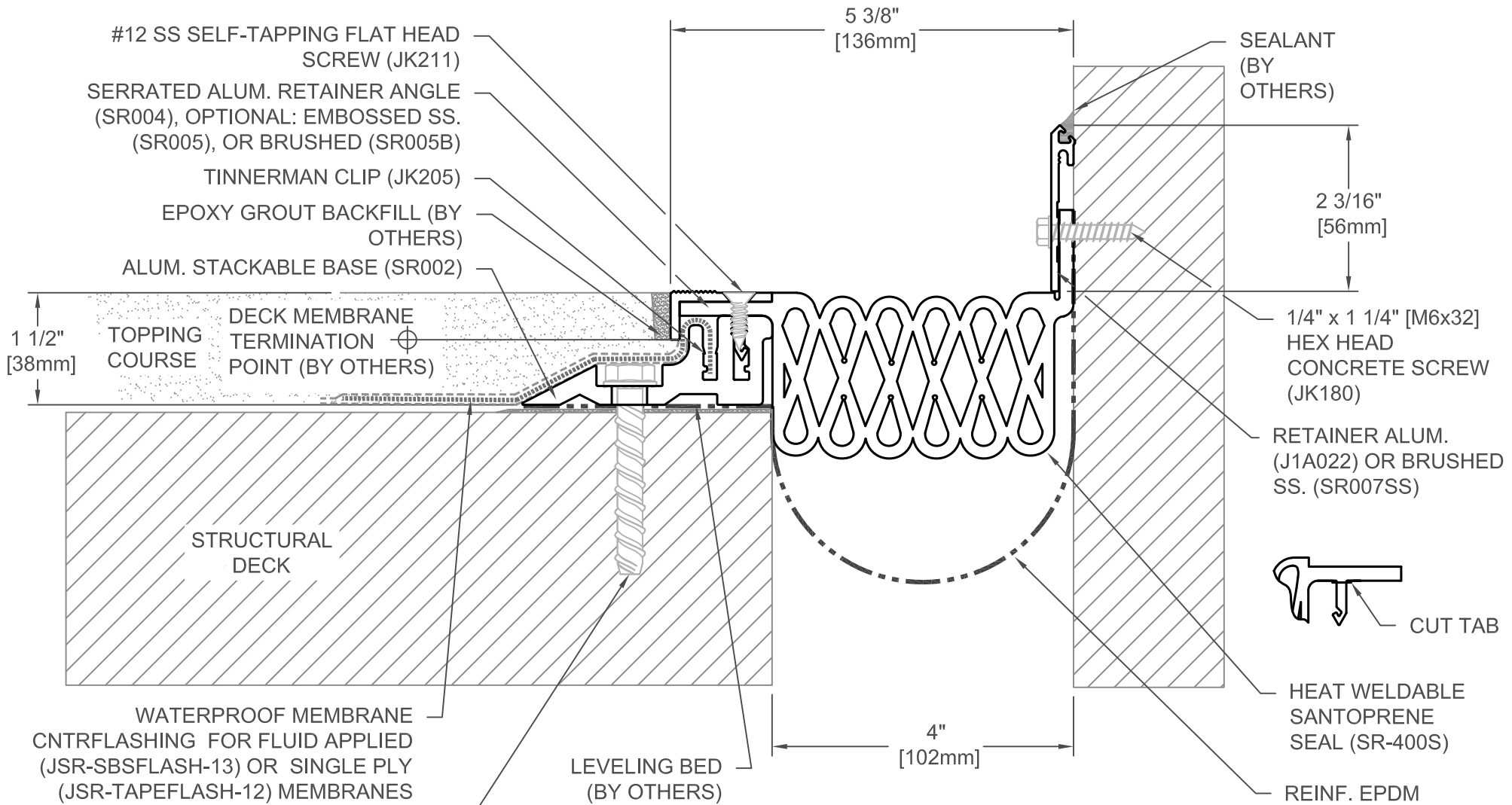
REINF. EPDM VAPOR BARRIER (JL012-RVB) NOTE: SET IN CONT. BED OF BUTYL SEALANT (BY OTHERS) TERMINATE RVB AT OUTSIDE EDGES OF SYSTEM

| |
|--------------|
| FINISH: MILL |
| PROJECT: |
| CUSTOMER: |
| LOCATION: |

APPLICATION- EXTERIOR COMPRESSION SEAL W/ ALUM. FRAMES

| | |
|--------|--------------|
| DATE: | 7/8/17 |
| SCALE: | 1:2 |
| DOC: | CADJM.191/R3 |

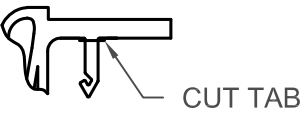




SR-400-38A2

| JOINT WIDTH | | MOVEMENT ± | | | |
|-------------|-----|------------|----|---------|-----|
| | | MINIMUM | | MAXIMUM | |
| US | mm | US | mm | US | mm |
| 4" | 102 | 2" | 51 | 6" | 152 |

3/8" [10mm] HEX HEAD CONCRETE SCREW ANCHOR (JK173) (7 PER FRAME @ 18" [457mm])

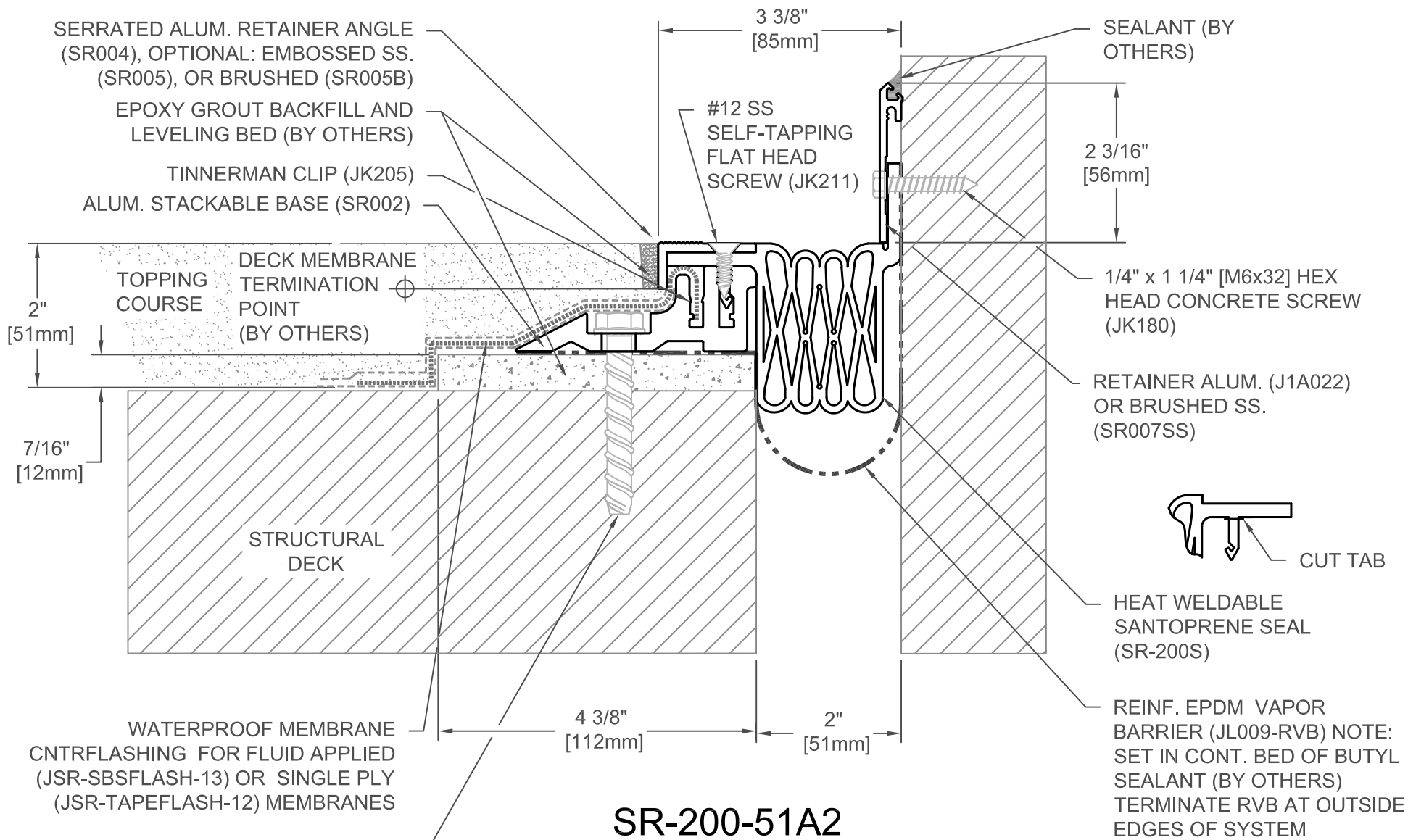


| |
|--------------|
| FINISH: MILL |
| PROJECT: |
| CUSTOMER: |
| LOCATION: |

APPLICATION-
EXTERIOR COMPRESSION SEAL W/ ALUM. FRAMES

| | |
|--------|--------------|
| DATE: | 7/8/17 |
| SCALE: | 1:2 |
| DOC: | CADJM.191/R3 |





SR-200-51A2

| JOINT WIDTH | | MOVEMENT ± | | | |
|-------------|----|------------|----|---------|----|
| | | MINIMUM | | MAXIMUM | |
| US | mm | US | mm | US | mm |
| 2" | 51 | 1" | 25 | 3" | 75 |

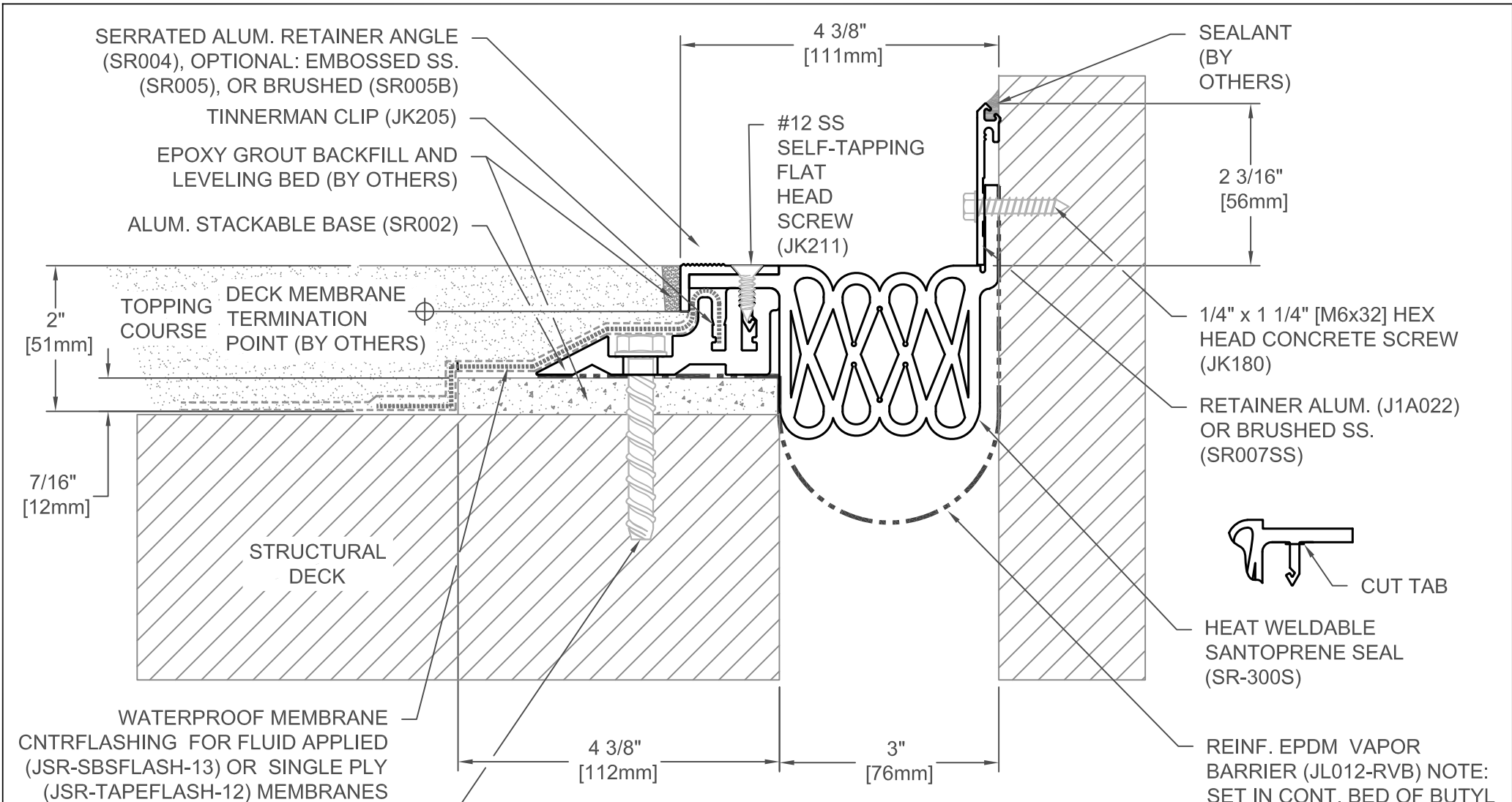
| |
|--------------|
| FINISH: MILL |
| PROJECT: |
| CUSTOMER: |
| LOCATION: |

APPLICATION- EXTERIOR COMPRESSION SEAL W/ ALUM. FRAMES

| | |
|--------|--------------|
| DATE: | 7/8/17 |
| SCALE: | 1:2 |
| DOC: | CADJM.191/R3 |



For More Information Visit: Inprocorp.com



SR-300-51A2

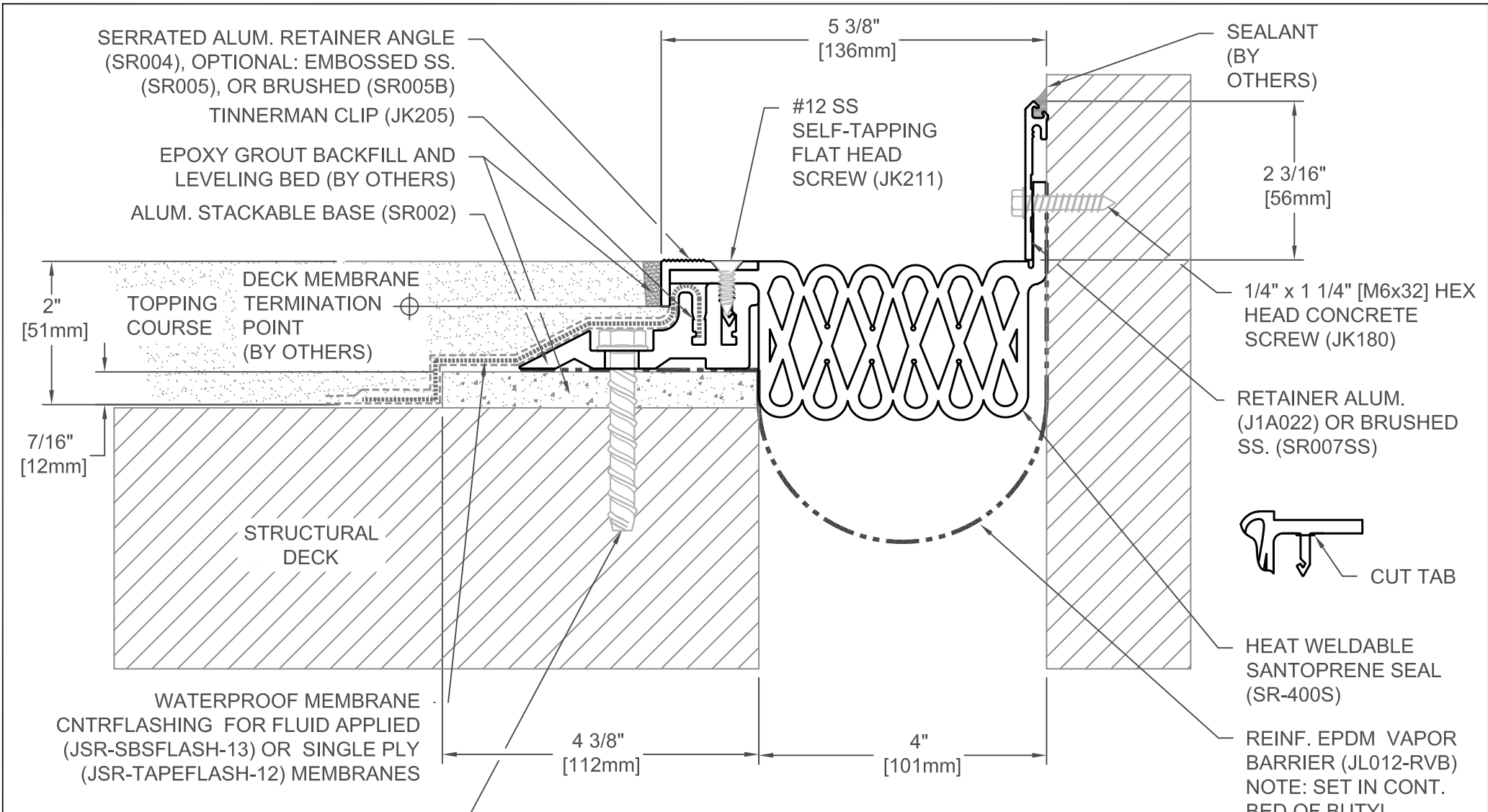
| JOINT WIDTH | | MOVEMENT ± | | | |
|-------------|----|------------|----|---------|-----|
| | | MINIMUM | | MAXIMUM | |
| US | mm | US | mm | US | mm |
| 3" | 76 | 1 1/2" | 38 | 4 1/2" | 114 |

| |
|--------------|
| FINISH: MILL |
| PROJECT: |
| CUSTOMER: |
| LOCATION: |

APPLICATION-
EXTERIOR COMPRESSION SEAL W/ ALUM. FRAMES

| | |
|--------|--------------|
| DATE: | 7/8/17 |
| SCALE: | 1:2 |
| DOC: | CADJM.191/R3 |





SR-400-51A2

| JOINT WIDTH | | MOVEMENT ± | | | |
|-------------|-----|------------|----|----|-----|
| US | mm | US | mm | US | mm |
| 4" | 102 | 2" | 51 | 6" | 152 |

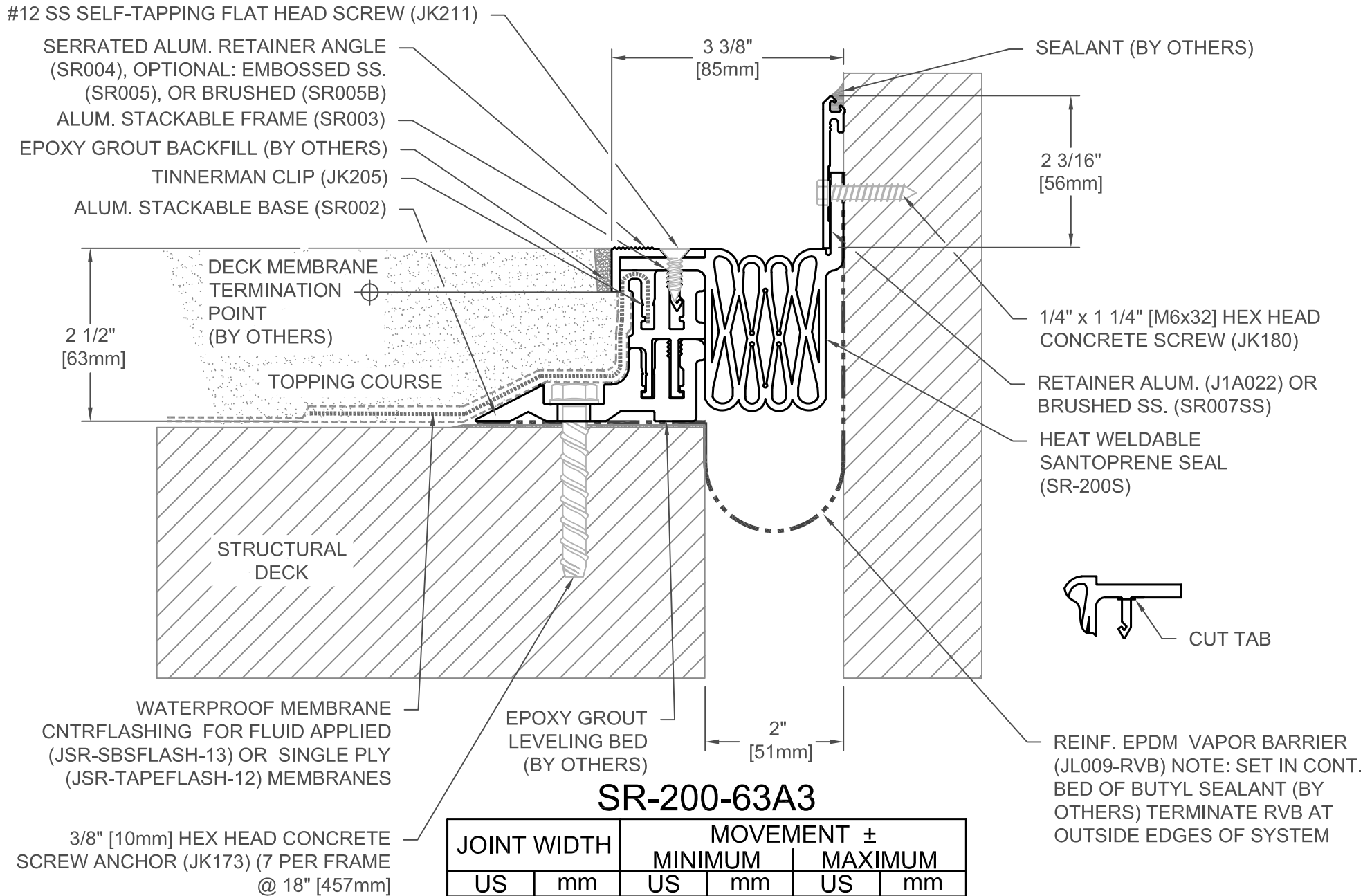
| |
|--------------|
| FINISH: MILL |
| PROJECT: |
| CUSTOMER: |
| LOCATION: |

APPLICATION-
EXTERIOR COMPRESSION SEAL W/ ALUM. FRAMES

| | |
|--------|--------------|
| DATE: | 7/8/17 |
| SCALE: | 1:2 |
| DOC: | CADJM.191/R3 |



For More Information Visit: Inprocorp.com



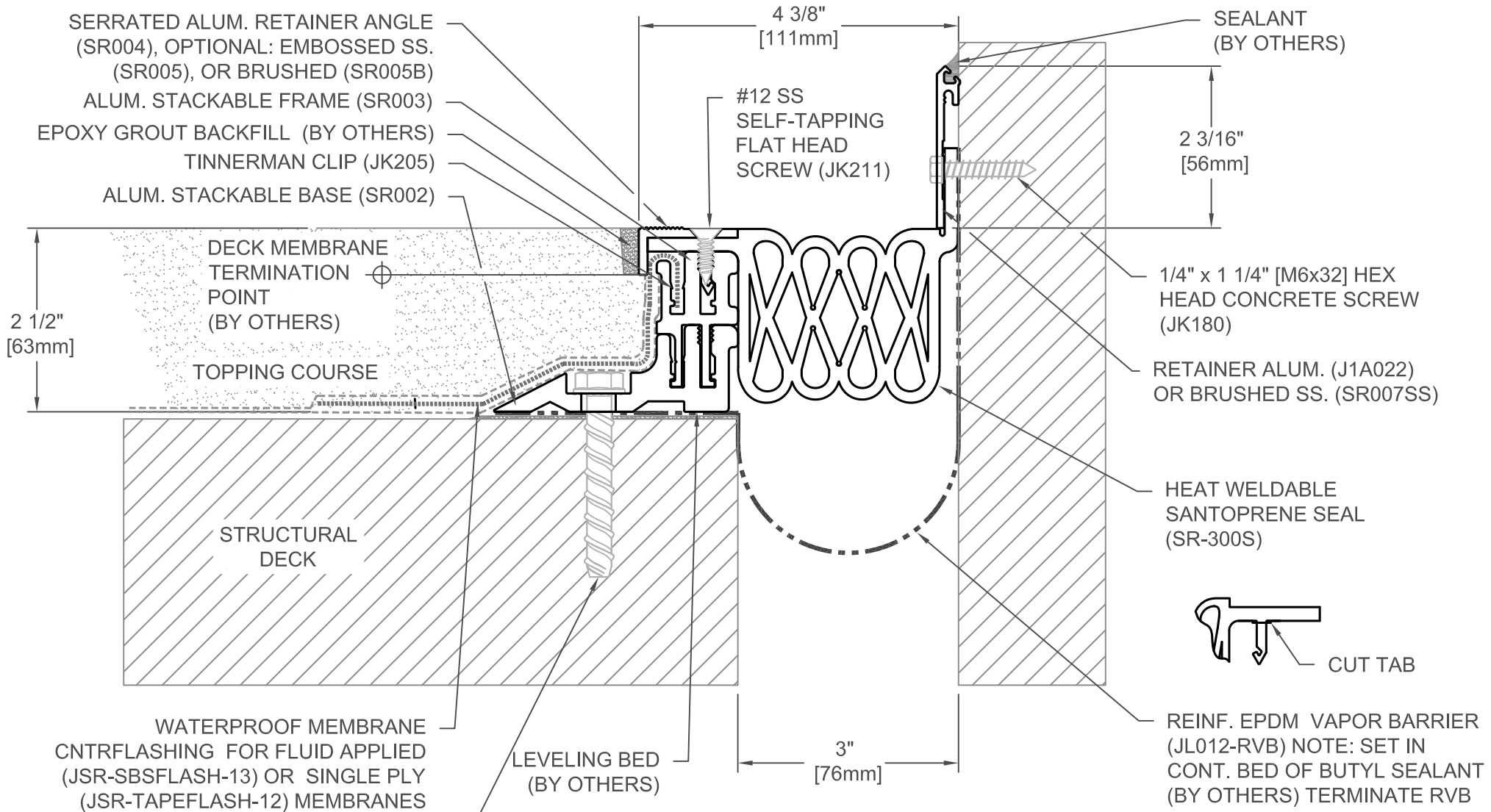
| |
|--------------|
| FINISH: MILL |
| PROJECT: |
| CUSTOMER: |
| LOCATION: |

APPLICATION-
EXTERIOR COMPRESSION SEAL W/ ALUM. FRAMES

| | |
|--------|--------------|
| DATE: | 7/8/17 |
| SCALE: | 1:2 |
| DOC: | CADJM.191/R3 |

inpro.

For More Information Visit: Inprocorp.com



SR-300-63A2

| JOINT WIDTH | | MOVEMENT ± | | | |
|-------------|----|------------|----|---------|-----|
| | | MINIMUM | | MAXIMUM | |
| US | mm | US | mm | US | mm |
| 3" | 76 | 1 1/2" | 38 | 4 1/2" | 114 |

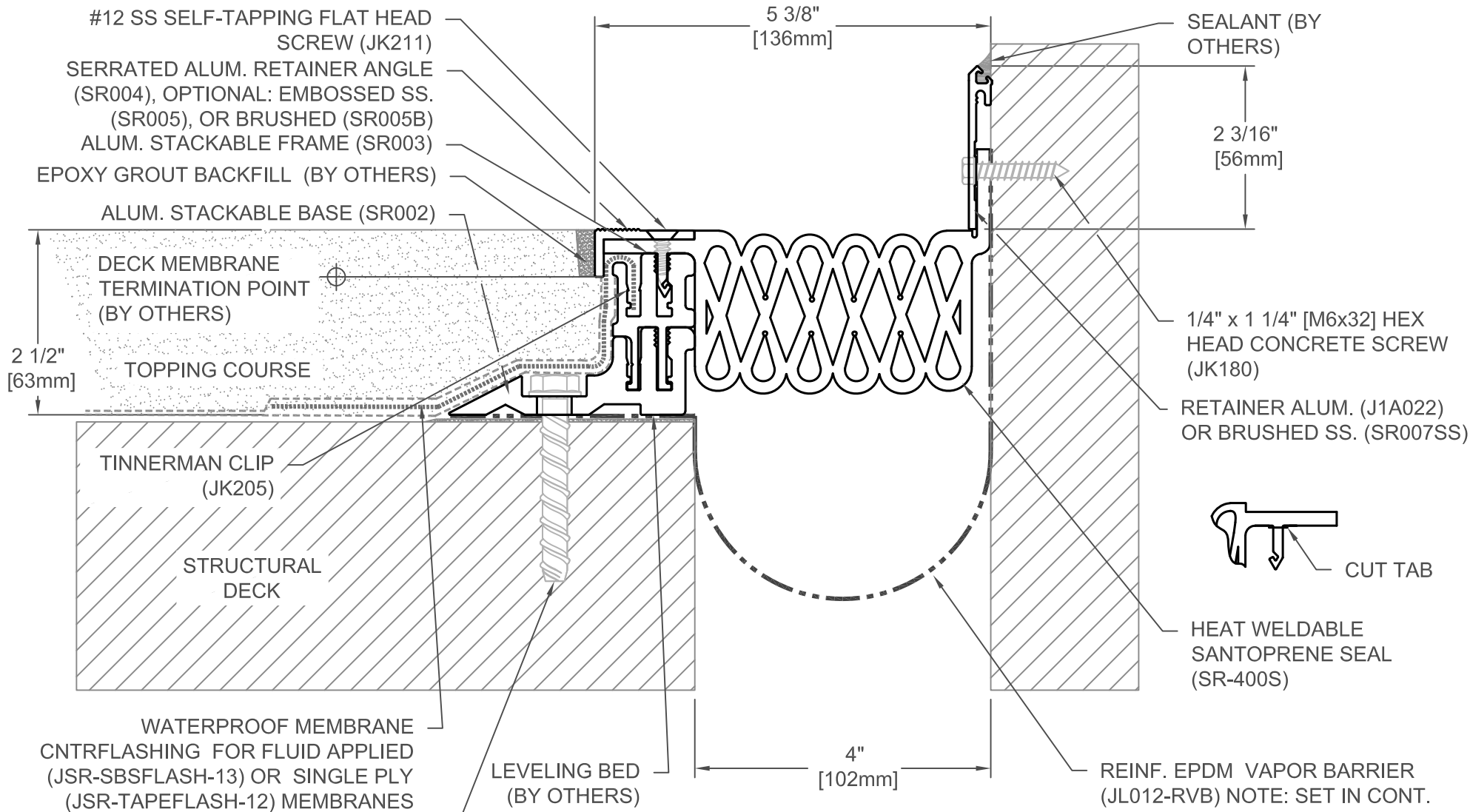
3/8" [10mm] HEX HEAD CONCRETE SCREW ANCHOR (JK173) (7 PER FRAME @ 18" [457mm])

| |
|--------------|
| FINISH: MILL |
| PROJECT: |
| CUSTOMER: |
| LOCATION: |

APPLICATION-
EXTERIOR COMPRESSION SEAL W/ ALUM. FRAMES

| | |
|--------|--------------|
| DATE: | 7/8/17 |
| SCALE: | 1:2 |
| DOC: | CADJM.191/R3 |





SR-400-63A2

| JOINT WIDTH | | MOVEMENT ± | | | |
|-------------|-----|------------|----|----|-----|
| US | mm | US | mm | US | mm |
| 4" | 102 | 2" | 51 | 6" | 152 |

| |
|--------------|
| FINISH: MILL |
| PROJECT: |
| CUSTOMER: |
| LOCATION: |

APPLICATION-
EXTERIOR COMPRESSION SEAL W/ ALUM. FRAMES

| | |
|--------|--------------|
| DATE: | 7/8/17 |
| SCALE: | 1:2 |
| DOC: | CADJM.191/R3 |

inpro.
For More Information Visit: Inprocorp.com