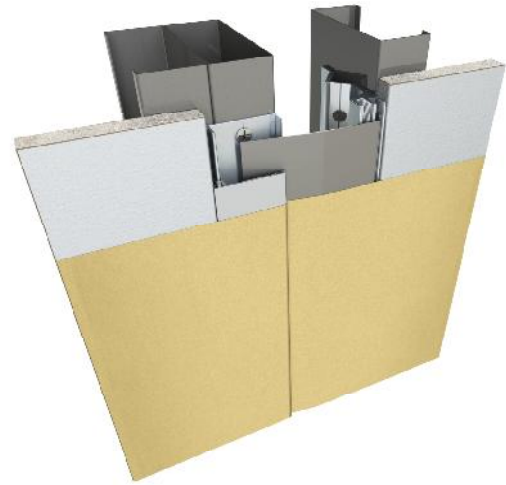


# 318 Series

A07 - Wall to Wall

A09 - Wall to Corner



**Movement Rating  $\pm$  50%**

## Product Guide



Thermal



Interior



Fire Rated  
Option



Vapor Barrier  
Option



Seismic

- ▶ System capable of reducing joint widths of up to 4" (100 mm) down to a minimal sightline of 1/8" (3mm)
- ▶ Specially designed for wall paper and vinyl wall covering
- ▶ Stainless steel leaf spring ensures cover plate is snug against frame at all times.
- ▶ Lack of noticeable sightline preferred by interior designers
- ▶ Perfect for both renovation & new construction projects.
- ▶ Designed to lay flush with 5/8" (16mm) drywall.

Application	System	W		H1		S		B		Movement +/-			
		Joint Width		Frame Height 1		Sightline		Blockout		Horizontal		Vertical	
		US	mm	US	mm	US	mm	US	mm	US	mm	US	mm
Wall to Wall	318-A07-050	2"	51	5/8"	16	1/8"	3	*	*	1"	25	1/2"	13
	318-A07-075	3"	76	5/8"	16	1/8"	3	*	*	1 1/2"	38	3/4"	19
	318-A07-100	4"	102	5/8"	16	1/8"	3	*	*	2"	51	1"	25
Wall to Corner	318-A09-050	2"	51	5/8"	16	1/8"	3	*	*	1"	13	1/2"	13
	318-A09-075	3"	76	5/8"	16	1/8"	3	*	*	1 1/2"	38	3/4"	19
	318-A09-100	4"	102	5/8"	16	1/8"	3	*	*	2"	51	1"	25

IPC.1206/REV.5

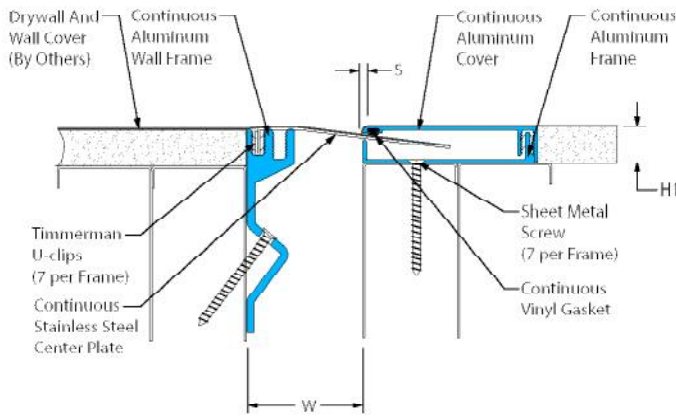
Inprocorp.com • 800.222.5556 • 262.679.9010  
 World Headquarters S80 W18766 Apollo Drive, Muskego, WI 53150 USA

**JOINTMASTER®**  
 EXPANSION JOINT SYSTEMS  
 A DIVISION OF INPRO®

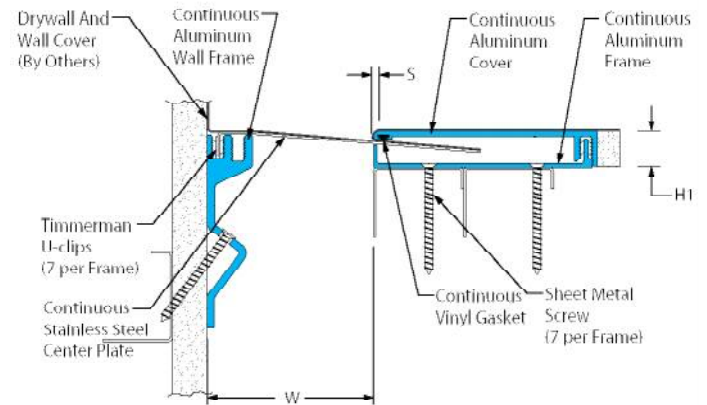
# 318 Series

## Seismic Wall Systems

318-A07 Wall/Wall  
(318-A07-050 system shown)



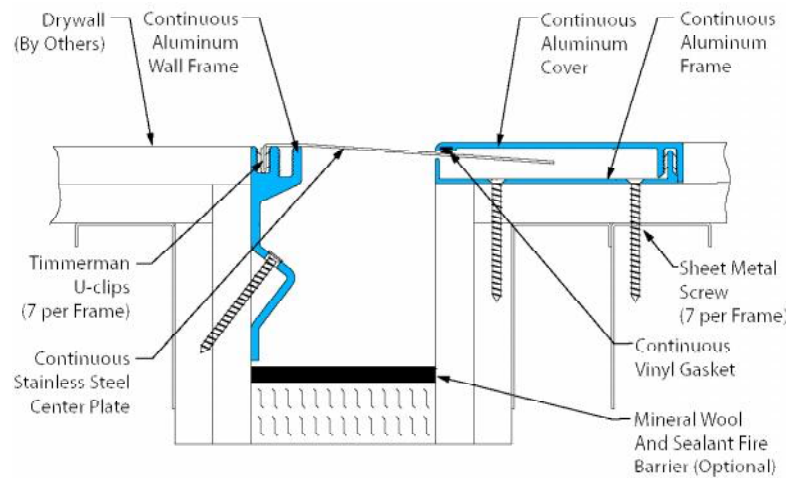
318-A09 Wall/Corner  
(318-A09-075 system shown)



# 318 Series

## Options

318-A07 Wall/Wall  
(318-A07-050 with Fire Barrier)



318-A07 Wall/Wall  
(318-A07-050 with Vapor Barrier)

