

# 120 Series New to Existing

A01 - Floor to Floor

A02 - Floor to Wall



**Movement Rating ± 25%**

Product Guide



Thermal



Interior



Fire Rated Option



Vapor Barrier Option



ADA Compliant

- ▶ Recessed mount frames for minimal sightline, adaptable with many floor finishes
- ▶ System is ideal for new to existing additions/renovations
- ▶ Dual durometer seal provides secure fit and optimal flexibility
- ▶ Snap-fit design for easy on site assembly
- ▶ Seamlessly integrates with the following wall and ceiling systems: 101,104,112,113,118 A07/A09
- ▶ Blockout frame available in different heights (see chart below)
- ▶ Standard loading capabilities

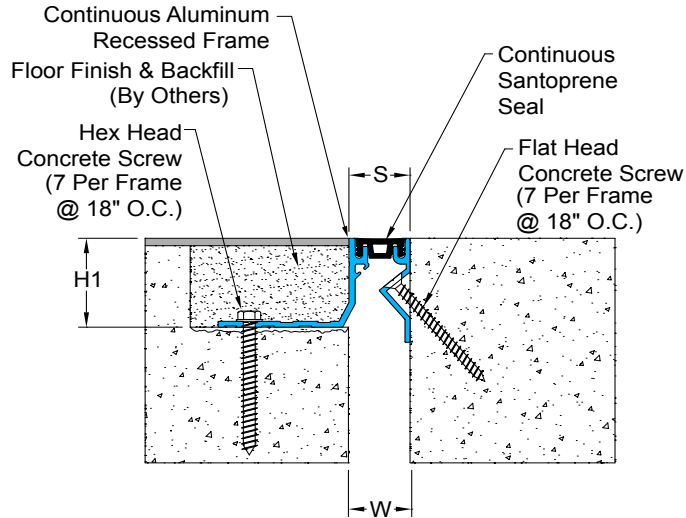
Application	System	W		H1		S		B		Movement +/-			
		Joint Width		Frame Height 1		Sightline		Blockout		Horizontal		Vertical	
		US	mm	US	mm	US	mm	US	mm	US	mm	US	mm
Floor/Floor	120-A01-025	1"	25	1"-1 1/2"-2"	25-38-50	1"	25	2 1/2"	64	1/4"	6	1/4"	6
	120-A01-038	1 1/2"	38	1"-1 1/2"-2"	25-38-50	1 3/8"	38	2 1/2"	64	3/8"	10	3/8"	10
Floor/Wall	120-A02-025	1"	25	1"-1 1/2"-2"	25-38-50	1"	25	2 1/2"	64	1/4"	6	1/4"	6
	120-A02-038	1 1/2"	38	1"-1 1/2"-2"	25-38-50	1 3/8"	38	2 1/2"	64	3/8"	10	3/8"	10

IPC.1519/REV.6

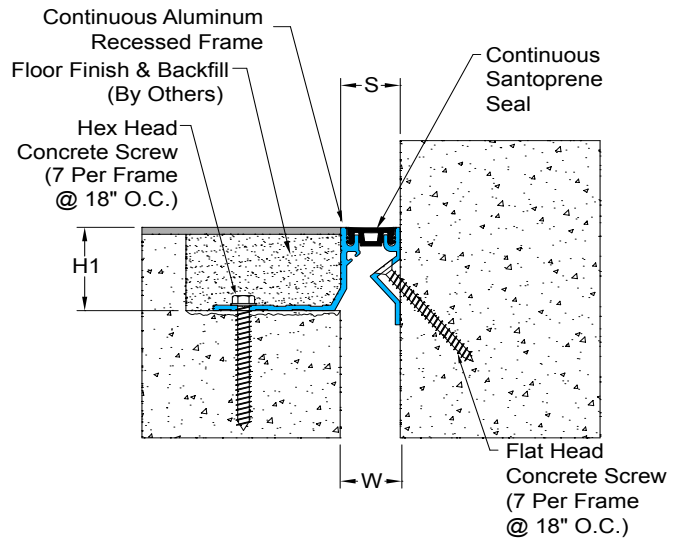
# 120 Series

## Recessed Floor Systems

120-A01-2538 Floor/Floor  
(1" (25mm) system shown)

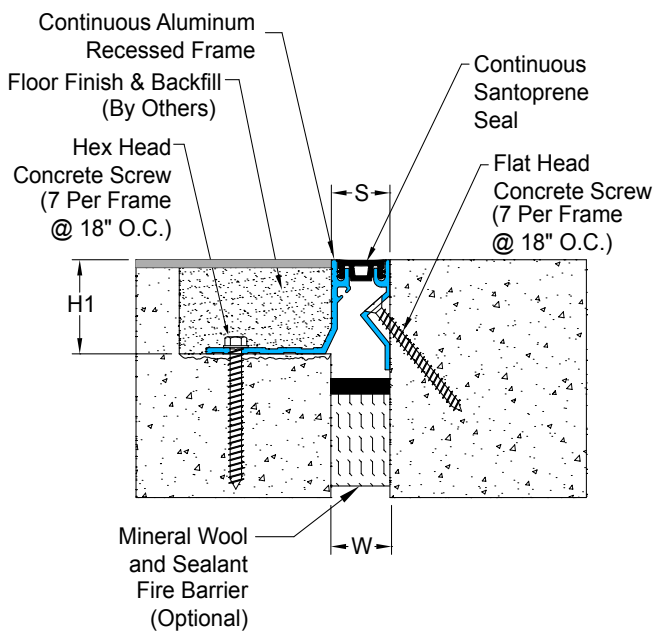


120-A02-2538 Floor/Wall  
(1" (25mm) system shown)



## 120 Series Options

120-A01 Floor/Floor With Mineral Wool  
(1" (25mm) system shown)



120-A01 Floor/Floor With Vapor Barrier  
(1" (25mm) system shown)

