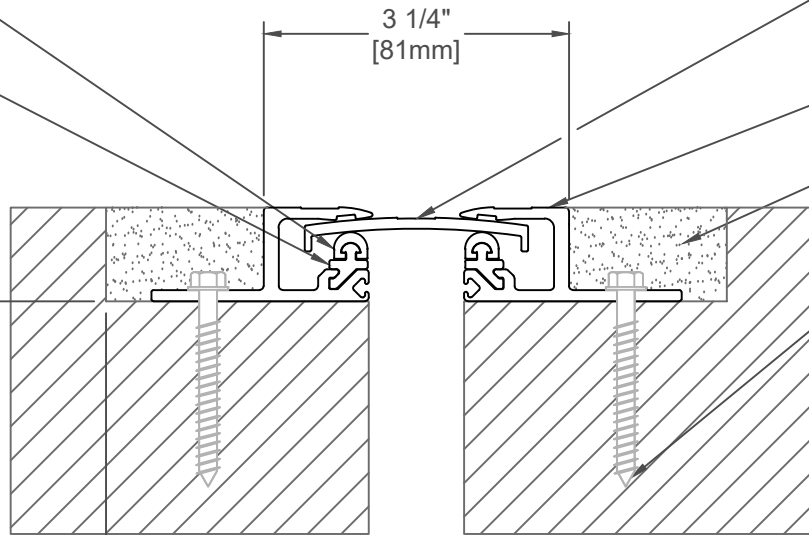


CONT. FLEXIBLE VINYL GASKET (J3D504)

CONT. ALUM. SLIDE-IN UPSTAND (J3B001)

1"  
[25mm]



CONT. ALUM. GLIDE PLATE W/  
CRENELATED SURFACE  
(J3C001)

CONT. ALUM. RECESSED  
FRAME (J3A001)

FIN. FLR. AND BACKFILL  
(BY OTHERS)

1/4" x 2 1/4" [M6x56] HEX HEAD  
CONCRETE SCREW (7 PER  
FRAME @ 18" [457mm] O.C.)  
(JK001)

2 3/4"  
[70mm]  
MIN. BLOCKOUT  
PER SIDE

1"  
[26mm]

### 300-A01-025

NOTE:  
TO DETERMINE BLOCKOUT DEPTH,  
DEDUCT THICKNESS OF THE FLOOR  
FINISH FROM FRAME HEIGHT

JOINT WIDTH		MOVEMENT ±			
		HORIZONTAL		VERTICAL	
US	mm	US	mm	US	mm
1"	25	1/2"	13	1/4"	6

FINISH: MILL

PROJECT:

CUSTOMER:

LOCATION:

APPLICATION-  
RECESSED FLOOR/FLOOR CONDITION  
NO BUMP GLIDE PLATE SEISMIC SYSTEM

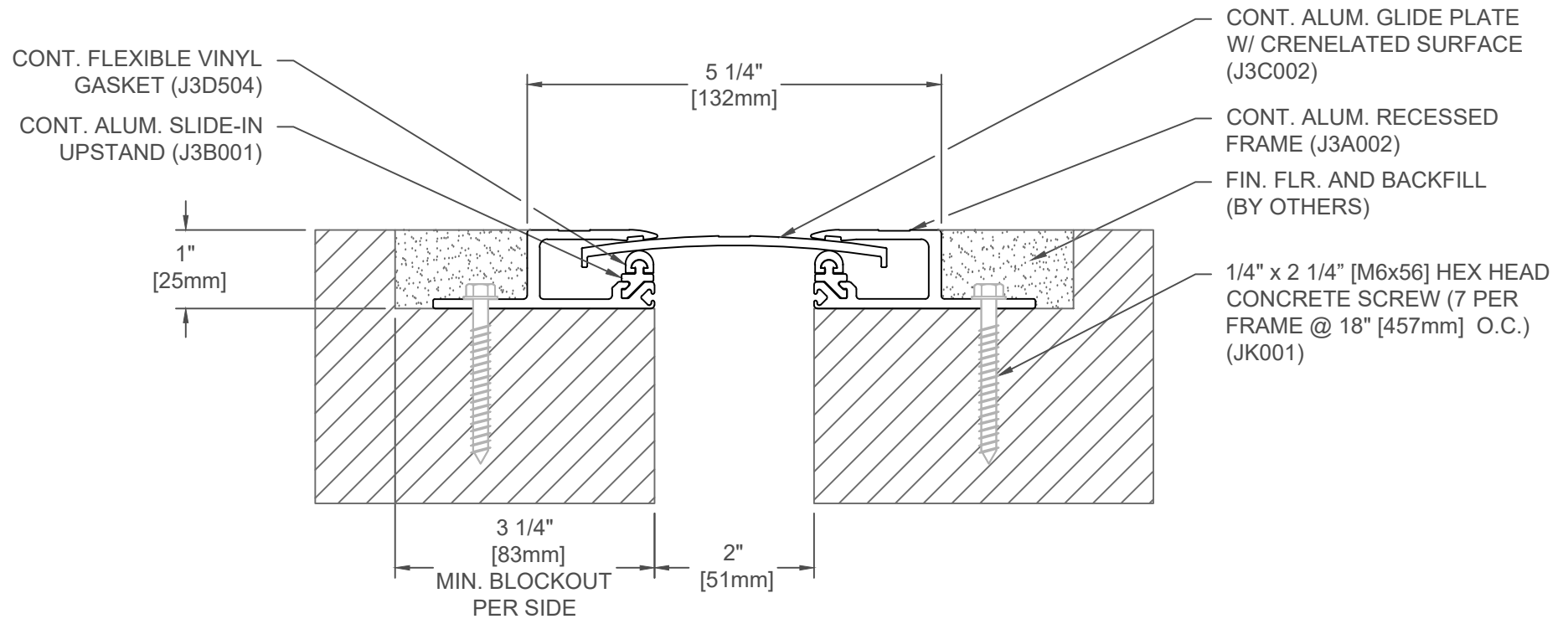
DATE: 6-20-04

SCALE: 1:2

DOC: CADJM.015/R1

**inpro.**

For More Information Visit: [Inprocorp.com](http://Inprocorp.com)



### 300-A01-050

NOTE:  
TO DETERMINE BLOCKOUT DEPTH,  
DEDUCT THICKNESS OF THE FLOOR  
FINISH FROM FRAME HEIGHT

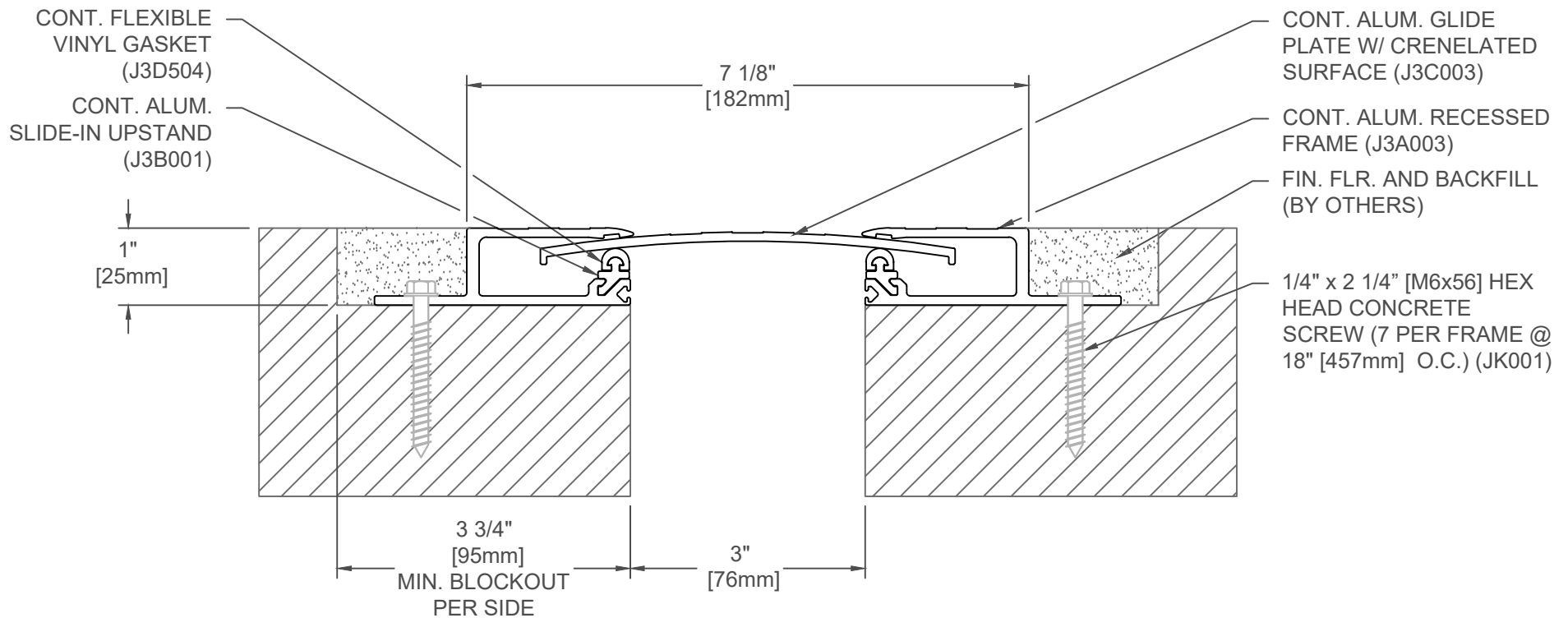
JOINT WIDTH		MOVEMENT ±			
		HORIZONTAL		VERTICAL	
US	mm	US	mm	US	mm
2"	51	1"	25	1/2"	13

FINISH: MILL
PROJECT:
CUSTOMER:
LOCATION:

APPLICATION-  
RECESSED FLOOR/FLOOR CONDITION  
NO BUMP GLIDE PLATE SEISMIC SYSTEM

DATE:	6-20-04
SCALE:	1:2
DOC:	CADJM.015/R1





### 300-A01-075

NOTE:  
TO DETERMINE BLOCKOUT DEPTH,  
DEDUCT THICKNESS OF THE FLOOR  
FINISH FROM FRAME HEIGHT

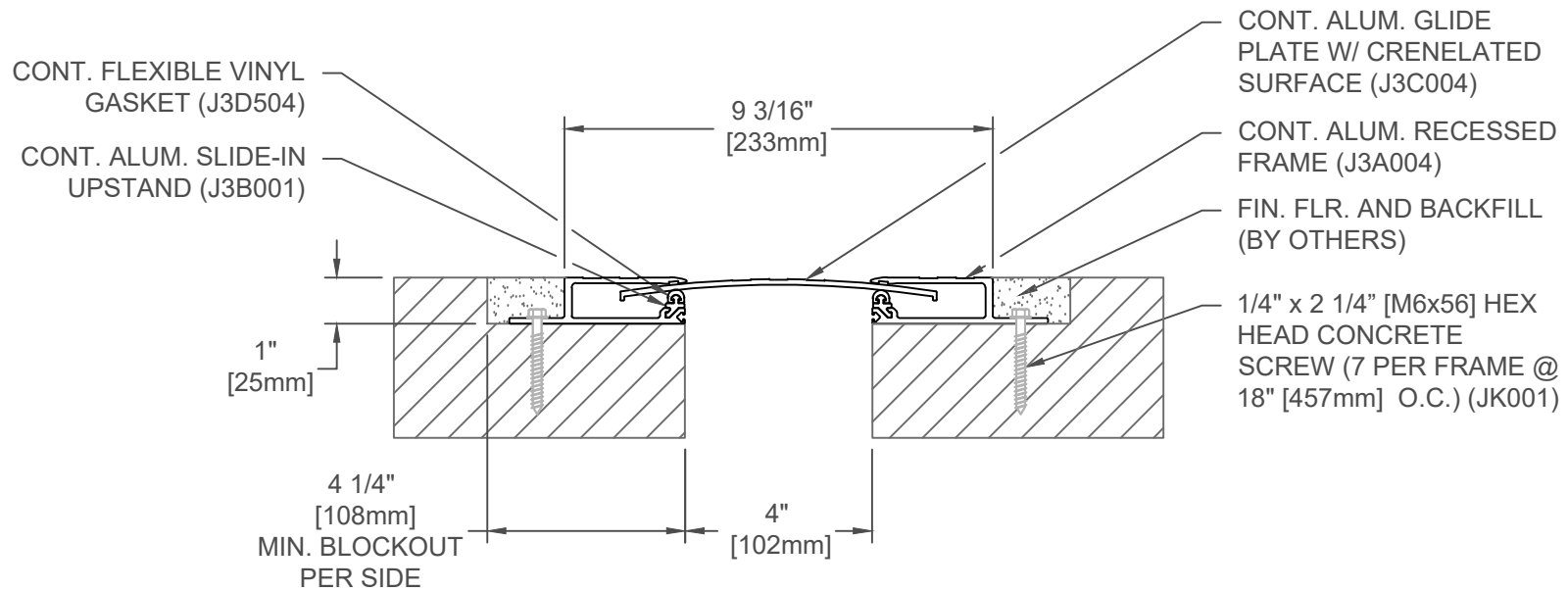
JOINT WIDTH		MOVEMENT ±			
		HORIZONTAL		VERTICAL	
US	mm	US	mm	US	mm
3"	76	1 1/2"	38	3/4"	19

FINISH: MILL
PROJECT:
CUSTOMER:
LOCATION:

APPLICATION-  
RECESSED FLOOR/FLOOR CONDITION  
NO BUMP GLIDE PLATE SEISMIC SYSTEM

DATE:	6-20-04
SCALE:	1:2
DOC:	CADJM.015/R1

**inpro.**  
For More Information Visit: [Inprocorp.com](http://Inprocorp.com)



### 300-A01-100

NOTE:  
TO DETERMINE BLOCKOUT DEPTH,  
DEDUCT THICKNESS OF THE FLOOR  
FINISH FROM FRAME HEIGHT

JOINT WIDTH		MOVEMENT ±			
		HORIZONTAL		VERTICAL	
US	mm	US	mm	US	mm
4"	102	2"	51	1"	25

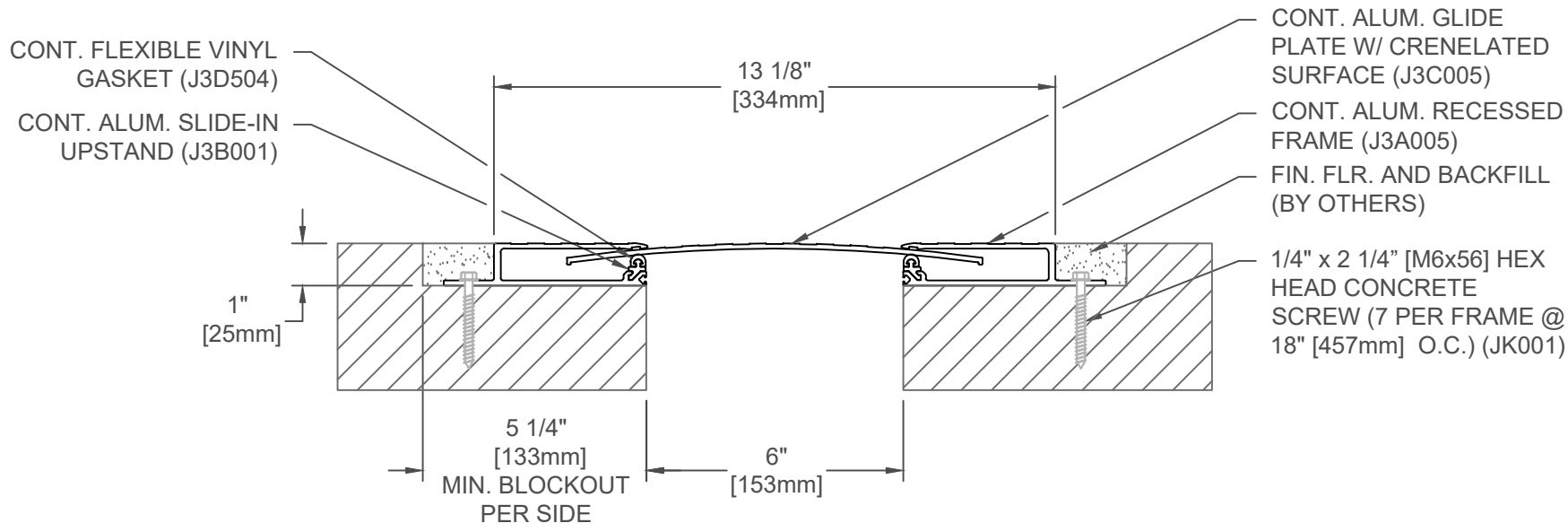
FINISH: MILL
PROJECT:
CUSTOMER:
LOCATION:

APPLICATION-  
RECESSED FLOOR/FLOOR CONDITION  
NO BUMP GLIDE PLATE SEISMIC SYSTEM

DATE:	6-20-04
SCALE:	1:4
DOC:	CADJM.015/R1

**inpro.**

For More Information Visit: [Inprocorp.com](http://Inprocorp.com)



### 300-A01-150

NOTE:  
TO DETERMINE BLOCKOUT DEPTH,  
DEDUCT THICKNESS OF THE FLOOR  
FINISH FROM FRAME HEIGHT

JOINT WIDTH		MOVEMENT ±			
		HORIZONTAL		VERTICAL	
US	mm	US	mm	US	mm
6"	152	3"	76	1 1/2"	38

FINISH: MILL
PROJECT:
CUSTOMER:
LOCATION:

APPLICATION-  
RECESSED FLOOR/FLOOR CONDITION  
NO BUMP GLIDE PLATE SEISMIC SYSTEM

DATE:	6-20-04
SCALE:	1:4
DOC:	CADJM.015/R1

**inpro.**  
For More Information Visit: [Inprocorp.com](http://Inprocorp.com)