

1/4" X 2 1/4" [M6 x 56] HEX HEAD
CONCRETE SCREW (7 PER FRAME
@ 18" [457mm] O.C.) (JK001)

3/16" X 2 1/4" [M4.5 x 56] FLAT HEAD
CONCRETE SCREW (7 PER FRAME
@ 18" [457mm] O.C.) (JK002)

120-A02-02538

SPECIFY SEAL COLOR:	
Black (J1D101)	
Beige (J1D102)	
Gray (J1D103)	
Off White (J1D104)	
Bright White (J1D105)	

JOINT WIDTH		MOVEMENT ±			
		HORIZONTAL		VERTICAL	
US	mm	US	mm	US	mm
1"	25	1/4"	6	1/4"	6

NOTE:
TO DETERMINE BLOCKOUT
DEPTH, DEDUCT THICKNESS OF
FIN. FLR. FROM FRAME HEIGHT.

FINISH: ALUM. FINISH-MILL
PROJECT:
CUSTOMER:
LOCATION:

APPLICATION-
RECESSED FLOOR/WALL CONDITION

DATE:	03-03-17
SCALE:	1:2
DOC:	CADJM.086R1

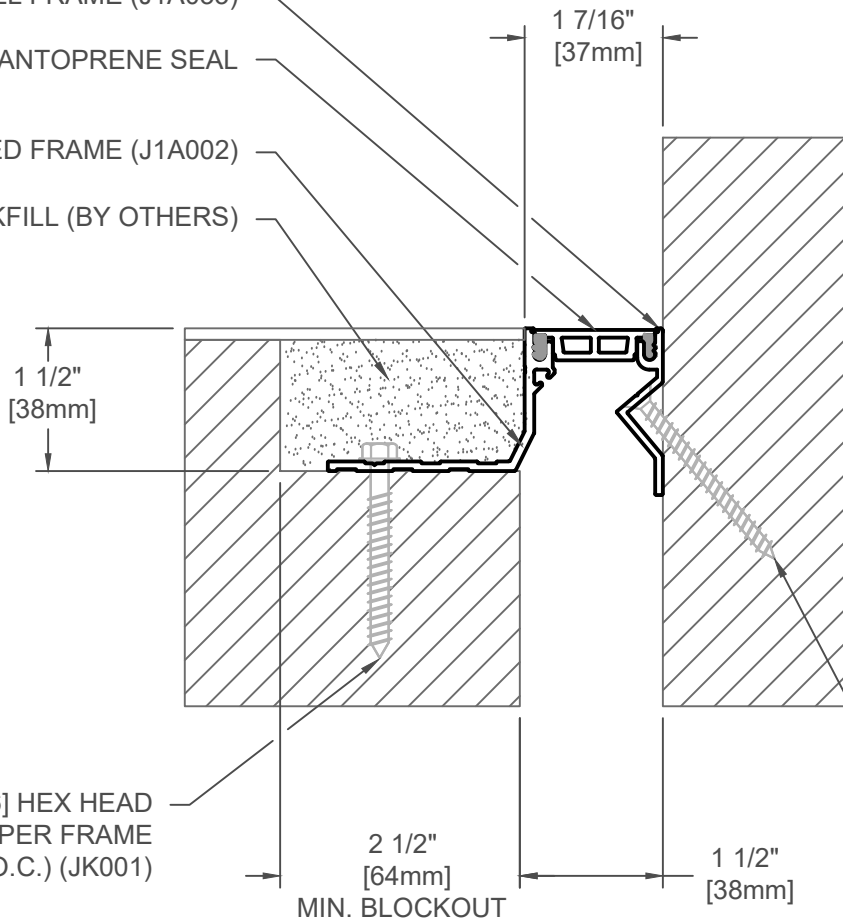


CONT. ALUM. FLUSH WALL FRAME (J1A033)

CONT. SANTOPRENE SEAL

CONT. ALUM. RECESSED FRAME (J1A002)

FIN. FLR. & BACKFILL (BY OTHERS)



1/4" X 2 1/4" [M6 x 56] HEX HEAD CONCRETE SCREW (7 PER FRAME @ 18" [457mm] O.C.) (JK001)

3/16" X 2 1/4" [M4.5 x 56] FLAT HEAD CONCRETE SCREW (7 PER FRAME @ 18" [457mm] O.C.) (JK002)

120-A02-03838

SPECIFY SEAL COLOR:	
Black (J1D151)	
Beige (J1D152)	
Gray (J1D153)	
Off White (J1D154)	
Bright White (J1D155)	

JOINT WIDTH		MOVEMENT ±			
		HORIZONTAL		VERTICAL	
US	mm	US	mm	US	mm
1-1/2"	38	3/8"	10	3/8"	10

NOTE:
TO DETERMINE BLOCKOUT DEPTH, DEDUCT THICKNESS OF FIN. FLR. FROM FRAME HEIGHT.

FINISH: ALUM. FINISH-MILL
PROJECT:
CUSTOMER:
LOCATION:

APPLICATION-
RECESSED FLOOR/WALL CONDITION

DATE:	03-03-17
SCALE:	1:2
DOC:	CADJM.086R1



For More Information Visit: Inprocorp.com